

For Research Use Only

# PLXDC2 Polyclonal antibody

Catalog Number: 12285-1-AP **2 Publications**



## Basic Information

<b>Catalog Number:</b> 12285-1-AP	<b>GenBank Accession Number:</b> BC012885	<b>Purification Method:</b> Antigen affinity purification
<b>Size:</b> 150ul , Concentration: 500 µg/ml by Nanodrop;	<b>GeneID (NCBI):</b> 84898	<b>Recommended Dilutions:</b> WB 1:500-1:3000 IHC 1:50-1:500
<b>Source:</b> Rabbit	<b>Full Name:</b> plexin domain containing 2	
<b>Isotype:</b> IgG	<b>Calculated MW:</b> 480 aa, 54 kDa	
<b>Immunogen Catalog Number:</b> AG2940	<b>Observed MW:</b> 54 kDa	

## Applications

<b>Tested Applications:</b> IHC, WB, ELISA	<b>Positive Controls:</b>
<b>Cited Applications:</b> IF, IHC, WB	<b>WB:</b> A431 cells, HeLa cells
<b>Species Specificity:</b> human, mouse, rat	<b>IHC:</b> human lung cancer tissue, human liver cancer tissue
<b>Cited Species:</b> human	

**Note-IHC: suggested antigen retrieval with TE buffer pH 9.0; (\*) Alternatively, antigen retrieval may be performed with citrate buffer pH 6.0**

## Background Information

PLXDC2 (Plexin-domain containing 2), also named tumor endothelial marker 7-related protein (TEM7R), is a single-pass type I membrane protein with some homology to nidogen and to plexins. PLXDC2 is located in tumor endothelium and plays a role in tumor angiogenesis. Three isoforms of PLXDC2 produced by alternative splicing have been described. Recent finding revealed that PLXDC2 is a mitogen for neural progenitors and functions as a novel regulator of the development of different brain regions, suggesting its role in coordinating proliferation and differentiation in the developing nervous system.

## Notable Publications

Author	Pubmed ID	Journal	Application
Yiming Guan	34124056	Front Cell Dev Biol	IHC,IF
Liwei Lang	37089864	Cancer Res Commun	WB,IHC

## Storage

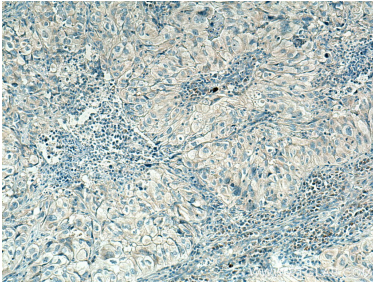
**Storage:**  
Store at -20°C. Stable for one year after shipment.  
**Storage Buffer:**  
PBS with 0.02% sodium azide and 50% glycerol pH 7.3.  
Aliquoting is unnecessary for -20°C storage

**\*\*\* 20ul sizes contain 0.1% BSA**

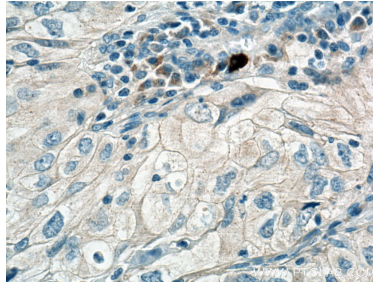
For technical support and original validation data for this product please contact:  
T: 1 (888) 4PTGLAB (1-888-478-4522) (toll free in USA), or 1(312) 455-8498 (outside USA)  
E: proteintech@ptglab.com  
W: ptglab.com

**This product is exclusively available under Proteintech Group brand and is not available to purchase from any other manufacturer.**

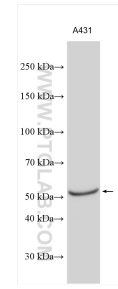
## Selected Validation Data



Immunohistochemical analysis of paraffin-embedded human lung cancer tissue slide using 12285-1-AP (PLXDC2 antibody) at dilution of 1:200 (under 10x lens). Heat mediated antigen retrieval with Tris-EDTA buffer (pH 9.0).



Immunohistochemical analysis of paraffin-embedded human lung cancer tissue slide using 12285-1-AP (PLXDC2 antibody) at dilution of 1:200 (under 40x lens). Heat mediated antigen retrieval with Tris-EDTA buffer (pH 9.0).



A431 cells were subjected to SDS PAGE followed by western blot with 12285-1-AP (PLXDC2 antibody) at dilution of 1:1500 incubated at room temperature for 1.5 hours.