

For Research Use Only

NELF Polyclonal antibody

Catalog Number: 12244-1-AP



Basic Information

Catalog Number: 12244-1-AP	GenBank Accession Number: BC016862	Purification Method: Antigen affinity purification
Size: 150ul , Concentration: 450 µg/ml by Nanodrop;	GeneID (NCBI): 26012	Recommended Dilutions: WB 1:500-1:2000 IHC 1:20-1:200 IF 1:50-1:500
Source: Rabbit	Full Name: nasal embryonic LHRH factor	
Isotype: IgG	Calculated MW: 507 aa, 56 kDa	
Immunogen Catalog Number: AG2888	Observed MW: 54-60 kDa	

Applications

Tested Applications: IF, IHC, WB, ELISA	Positive Controls:
Species Specificity: human, mouse, rat	WB : HeLa cells, human brain tissue, human colon tissue, mouse testis tissue
Note-IHC: suggested antigen retrieval with TE buffer pH 9.0; (*) Alternatively, antigen retrieval may be performed with citrate buffer pH 6.0	IHC : human colon cancer tissue,
	IF : HeLa cells,

Background Information

NSMF, also named as NELF (Nasal embryonic LHRH factor), couples NMDA-sensitive glutamate receptor signaling to the nucleus and triggers long-lasting changes in the cytoarchitecture of dendrites and spine synapse processes. NSMF has some isoforms with MW 44 kDa and 55-60 kDa. This antibody recognizes all the isoforms.

Storage

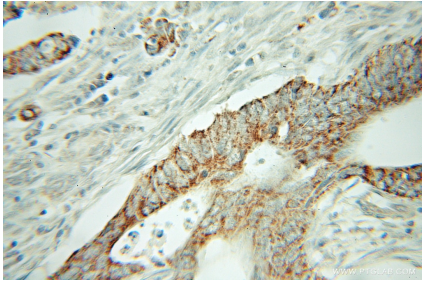
Storage:
Store at -20°C. Stable for one year after shipment.
Storage Buffer:
PBS with 0.02% sodium azide and 50% glycerol pH 7.3.
Aliquoting is unnecessary for -20°C storage

*** 20ul sizes contain 0.1% BSA

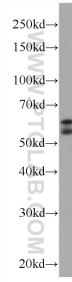
For technical support and original validation data for this product please contact:
T: 1 (888) 4PTGLAB (1-888-478-4522) (toll free in USA), or 1(312) 455-8498 (outside USA)
E: proteintech@ptglab.com
W: ptglab.com

This product is exclusively available under Proteintech Group brand and is not available to purchase from any other manufacturer.

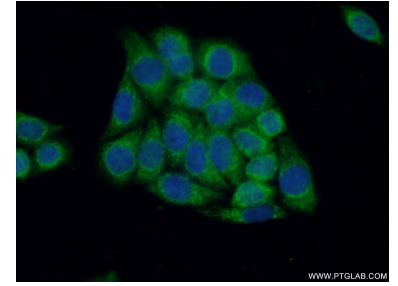
Selected Validation Data



Immunohistochemical analysis of paraffin-embedded human colon cancer using 12244-1-AP (NELF antibody) at dilution of 1:100 (under 10x lens).



HeLa cells were subjected to SDS PAGE followed by western blot with 12244-1-AP (NELF Antibody) at dilution of 1:1000 incubated at room temperature for 1.5 hours.



Immunofluorescent analysis of (10% Formaldehyde) fixed HeLa cells using 12244-1-AP (NELF antibody) at dilution of 1:50 and Alexa Fluor 488-conjugated AffiniPure Goat Anti-Rabbit IgG(H+L).