

For Research Use Only

# MYCBP Polyclonal antibody

Catalog Number: 12022-1-AP

Featured Product

5 Publications



## Basic Information

<b>Catalog Number:</b> 12022-1-AP	<b>GenBank Accession Number:</b> BC008686	<b>Purification Method:</b> Antigen affinity purification
<b>Size:</b> 150ul , Concentration: 500 µg/ml by Nanodrop and 273 µg/ml by Bradford method using BSA as the standard;	<b>GeneID (NCBI):</b> 26292	<b>Recommended Dilutions:</b> WB 1:500-1:3000 IHC 1:20-1:200 IF 1:20-1:200
<b>Source:</b> Rabbit	<b>Full Name:</b> c-myc binding protein	
<b>Isotype:</b> IgG	<b>Calculated MW:</b> 103 aa, 12 kDa	
<b>Immunogen Catalog Number:</b> AG2651	<b>Observed MW:</b> 12 kDa	

## Applications

<b>Tested Applications:</b> IF, IHC, WB, ELISA	<b>Positive Controls:</b>
<b>Cited Applications:</b> IF, WB	<b>WB :</b> human heart tissue, A549 cells, human kidney tissue, human lung tissue, human placenta tissue, HEK-293 cells
<b>Species Specificity:</b> human	<b>IHC :</b> human pancreas cancer tissue,
<b>Cited Species:</b> human, mouse	<b>IF :</b> HepG2 cells,
<b>Note-IHC: suggested antigen retrieval with TE buffer pH 9.0; (*) Alternatively, antigen retrieval may be performed with citrate buffer pH 6.0</b>	

## Background Information

MYC binding protein(MYCBP), encoded by MYCBP gene, binds to N-terminal region of MYC, and then MYC can activate E box-dependent transcription. Upon increasing expression of MYC, MYCBP translocates into the nucleus in the S phase of the cell cycle. MYCBP may involve in spermatogenesis, since it's found to be interacted with AKAP84/149 in the mitochondria in somatic cells and sperm. It highly expressed in heart, placenta, pancreas, skeletal muscle and kidney, but low in lung. This is a rabbit polyclonal antibody raised against full-length MYCBP of human origin.

## Notable Publications

Author	Pubmed ID	Journal	Application
Yongqi Wang	32965772	J Cell Mol Med	WB
Hagai Marmor-Kollet	33217318	Mol Cell	IF
S Mathia	29791781	Acta Physiol (Oxf)	WB

## Storage

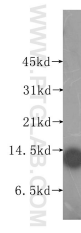
**Storage:**  
Store at -20°C. Stable for one year after shipment.  
**Storage Buffer:**  
PBS with 0.02% sodium azide and 50% glycerol pH 7.3.  
Aliquoting is unnecessary for -20°C storage

\*\*\* 20ul sizes contain 0.1% BSA

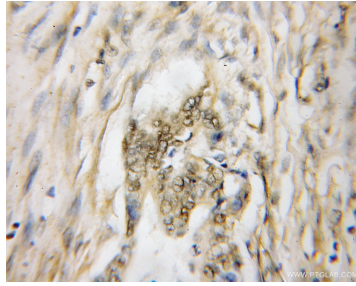
For technical support and original validation data for this product please contact:  
T: 1 (888) 4PTGLAB (1-888-478-4522) (toll free in USA), or 1(312) 455-8498 (outside USA) E: proteintech@ptglab.com W: ptglab.com

This product is exclusively available under Proteintech Group brand and is not available to purchase from any other manufacturer.

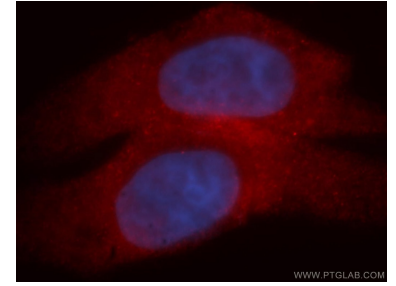
## Selected Validation Data



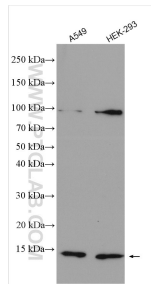
human heart tissue were subjected to SDS PAGE followed by western blot with 12022-1-AP (MYCBP antibody) at dilution of 1:500 incubated at room temperature for 1.5 hours.



Immunohistochemical analysis of paraffin-embedded human pancreas cancer using 12022-1-AP (MYCBP antibody) at dilution of 1:50 (under 10x lens).



Immunofluorescent analysis of HepG2 cells, using MYCBP antibody 12022-1-AP at 1:50 dilution and Rhodamine-labeled goat anti-rabbit IgG (red). Blue pseudocolor = DAPI (fluorescent DNA dye).



Various lysates were subjected to SDS PAGE followed by western blot with 12022-1-AP (MYCBP antibody) at dilution of 1:1000 incubated at room temperature for 1.5 hours.