

For Research Use Only

# PRTFDC1 Polyclonal antibody

Catalog Number: 11986-1-AP **1 Publications**



## Basic Information

<b>Catalog Number:</b> 11986-1-AP	<b>GenBank Accession Number:</b> BC008662	<b>Purification Method:</b> Antigen affinity purification
<b>Size:</b> 150ul, Concentration: 850 µg/ml by Nanodrop and 367 µg/ml by Bradford method using BSA as the standard;	<b>GeneID (NCBI):</b> 56952	<b>Recommended Dilutions:</b> WB 1:500-1:1000 IP 0.5-4.0 ug for IP and 1:500-1:1000 for WB
<b>Source:</b> Rabbit	<b>Full Name:</b> phosphoribosyl transferase domain containing 1	<b>IHC 1:20-1:200</b> <b>IF 1:50-1:500</b>
<b>Isotype:</b> IgG	<b>Calculated MW:</b> 225 aa, 26 kDa	
<b>Immunogen Catalog Number:</b> AG2614	<b>Observed MW:</b> 26 kDa	

## Applications

### Tested Applications:

IF, IHC, IP, WB, ELISA

### Cited Applications:

WB

### Species Specificity:

human, mouse

### Cited Species:

mouse

**Note-IHC: suggested antigen retrieval with TE buffer pH 9.0; (\*) Alternatively, antigen retrieval may be performed with citrate buffer pH 6.0**

### Positive Controls:

**WB:** fetal human brain tissue, human brain tissue, Y79 cells

**IP:** mouse brain tissue,

**IHC:** human ovary tumor tissue,

**IF:** HeLa cells,

## Background Information

### Notable Publications

Author	Pubmed ID	Journal	Application
Keebaugh Alaine C AC	21818316	PLoS One	WB

## Storage

### Storage:

Store at -20°C. Stable for one year after shipment.

### Storage Buffer:

PBS with 0.02% sodium azide and 50% glycerol pH 7.3.

Aliquoting is unnecessary for -20°C storage

**\*\*\* 20ul sizes contain 0.1% BSA**

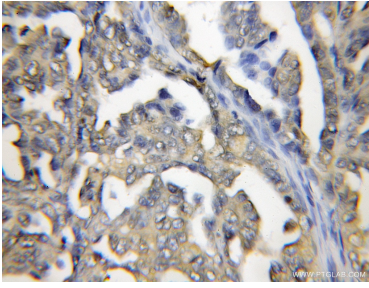
For technical support and original validation data for this product please contact:

T: 1 (888) 4PTGLAB (1-888-478-4522) (toll free in USA), or 1(312) 455-8498 (outside USA)

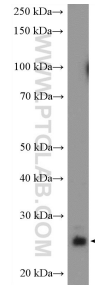
E: [proteintech@ptglab.com](mailto:proteintech@ptglab.com)  
W: [ptglab.com](http://ptglab.com)

**This product is exclusively available under Proteintech Group brand and is not available to purchase from any other manufacturer.**

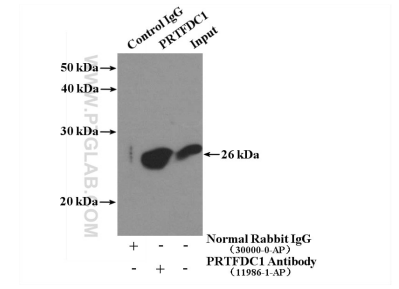
## Selected Validation Data



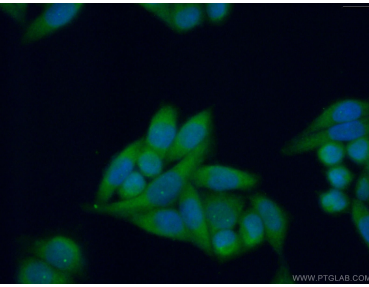
Immunohistochemical analysis of paraffin-embedded human ovary tumor using 11986-1-AP (PRTFDC1 antibody) at dilution of 1:50 (under 10x lens).



fetal human brain tissue were subjected to SDS PAGE followed by western blot with 11986-1-AP (PRTFDC1 Antibody) at dilution of 1:600 incubated at room temperature for 1.5 hours.



IP Result of anti-PRTFDC1 (IP:11986-1-AP, 4ug; Detection:11986-1-AP 1:600) with mouse brain tissue lysate 4000ug.



Immunofluorescent analysis of (4% PFA) fixed HeLa cells using 11986-1-AP (PRTFDC1 antibody) at dilution of 1:50 and Alexa Fluor 488-conjugated AffiniPure Goat Anti-Rabbit IgG(H+L).