

For Research Use Only

ROBO3 Polyclonal antibody

Catalog Number: 11982-1-AP



Basic Information

Catalog Number: 11982-1-AP	GenBank Accession Number: BC008623	Purification Method: Antigen affinity purification
Size: 150ul , Concentration: 550 µg/ml by Nanodrop;	GeneID (NCBI): 64221	Recommended Dilutions: WB 1:500-1:2000
Source: Rabbit	Full Name: roundabout, axon guidance receptor, homolog 3 (Drosophila)	
Isotype: IgG	Calculated MW: 148 kDa	
Immunogen Catalog Number: AG2608	Observed MW: 200-250 kDa, 148 kDa	

Applications

Tested Applications: WB, ELISA	Positive Controls: WB : Neuro-2a cells, Y79 cells
Species Specificity: human, mouse	

Background Information

ROBO3 belongs to the immunoglobulin superfamily and ROBO family. ROBO3 is thought to be involved during neural development in axonal navigation at the ventral midline of the neural tube. In spinal cord development, it plays a role in guiding commissural axons probably by preventing premature sensitivity to Slit proteins thus inhibiting Slit signaling through ROBO1. It is required for hindbrain axon midline crossing. Defects in ROBO3 are a cause of familial horizontal gaze palsy with progressive scoliosis (HGPPS).

Storage

Storage:
Store at -20°C. Stable for one year after shipment.
Storage Buffer:
PBS with 0.02% sodium azide and 50% glycerol pH 7.3.
Aliquoting is unnecessary for -20°C storage

*** 20ul sizes contain 0.1% BSA

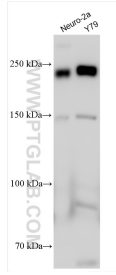
For technical support and original validation data for this product please contact:

T: 1 (888) 4PTGLAB (1-888-478-4522) (toll free in USA), or 1(312) 455-8498 (outside USA)

E: proteintech@ptglab.com
W: ptglab.com

This product is exclusively available under Proteintech Group brand and is not available to purchase from any other manufacturer.

Selected Validation Data



Various lysates were subjected to SDS PAGE followed by western blot with 11982-1-AP (ROBO3 antibody) at dilution of 1:1000 incubated at room temperature for 1.5 hours.