

For Research Use Only

SCEL Polyclonal antibody

Catalog Number: 11906-1-AP



Basic Information

Catalog Number: 11906-1-AP	GenBank Accession Number: BC020726	Purification Method: Antigen affinity purification
Size: 150ul , Concentration: 800 µg/ml by Nanodrop and 333 µg/ml by Bradford method using BSA as the standard;	GeneID (NCBI): 8796	Recommended Dilutions: WB 1:1000-1:5000 IHC 1:50-1:500 IF 1:50-1:500
Source: Rabbit	Full Name: sciellin	
Isotype: IgG	Calculated MW: 668 aa, 75 kDa	
Immunogen Catalog Number: AG2578	Observed MW: 70-78 kDa	

Applications

Tested Applications:
FC, IF, IHC, WB, ELISA

Species Specificity:
human, mouse

Note-IHC: suggested antigen retrieval with TE buffer pH 9.0; (*) Alternatively, antigen retrieval may be performed with citrate buffer pH 6.0

Positive Controls:

WB : human saliva tissue, A431 cells, human skin tissue, mouse skin tissue

IHC : human renal cell carcinoma tissue,

IF : HepG2 cells,

Background Information

Storage

Storage:
Store at -20°C. Stable for one year after shipment.
Storage Buffer:
PBS with 0.02% sodium azide and 50% glycerol pH 7.3.
Aliquoting is unnecessary for -20°C storage

*** 20ul sizes contain 0.1% BSA

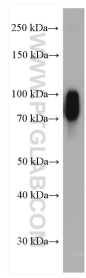
For technical support and original validation data for this product please contact:

T: 1 (888) 4PTGLAB (1-888-478-4522) (toll free in USA), or 1(312) 455-8498 (outside USA)

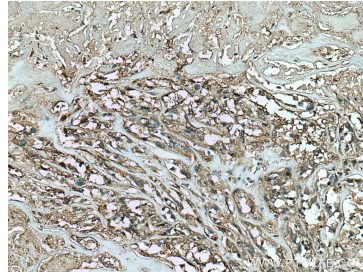
E: proteintech@ptglab.com
W: ptglab.com

This product is exclusively available under Proteintech Group brand and is not available to purchase from any other manufacturer.

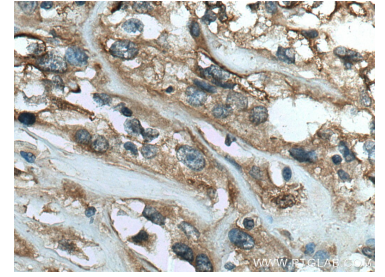
Selected Validation Data



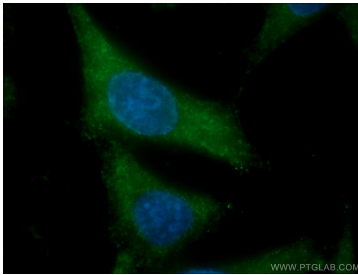
human saliva were subjected to SDS PAGE followed by western blot with 11906-1-AP (SCEL antibody) at dilution of 1:4000 incubated at room temperature for 1.5 hours.



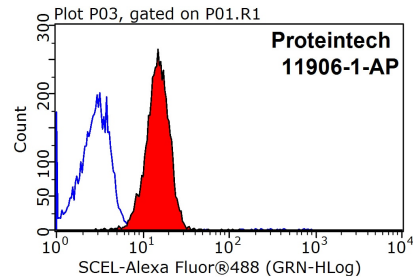
Immunohistochemical analysis of paraffin-embedded human renal cell carcinoma tissue slide using 11906-1-AP (SCEL antibody) at dilution of 1:200 (under 10x lens). Heat mediated antigen retrieval with Tris-EDTA buffer (pH 9.0).



Immunohistochemical analysis of paraffin-embedded human renal cell carcinoma tissue slide using 11906-1-AP (SCEL antibody) at dilution of 1:200 (under 40x lens). Heat mediated antigen retrieval with Tris-EDTA buffer (pH 9.0).



Immunofluorescent analysis of (-20°C Ethanol) fixed HepG2 cells using 11906-1-AP (SCEL antibody) at dilution of 1:50 and CoraLite488-Conjugated AffiniPure Goat Anti-Rabbit IgG(H+L).



1×10^6 HeLa cells were stained with 0.2ug SCEL antibody (11906-1-AP, red) and control antibody (blue). Fixed with 90% MeOH blocked with 3% BSA (30 min). Alexa Fluor 488-conjugated AffiniPure Goat Anti-Rabbit IgG(H+L) with dilution 1:1500.