

For Research Use Only

# SERPINA10 Polyclonal antibody

Catalog Number: 11851-1-AP



## Basic Information

<b>Catalog Number:</b> 11851-1-AP	<b>GenBank Accession Number:</b> BC022261	<b>Purification Method:</b> Antigen affinity purification
<b>Size:</b> 150ul, Concentration: 350 µg/ml by Nanodrop and 247 µg/ml by Bradford method using BSA as the standard;	<b>GeneID (NCBI):</b> 51156	<b>Recommended Dilutions:</b> WB 1:500-1:3000 IP 0.5-4.0 ug for IP and 1:500-1:2000 for WB
<b>Source:</b> Rabbit	<b>Full Name:</b> serpin peptidase inhibitor, clade A (alpha-1 antiproteinase, antitrypsin), member 10	<b>IHC 1:20-1:200</b> <b>IF 1:20-1:200</b>
<b>Isotype:</b> IgG	<b>Calculated MW:</b> 444 aa, 51 kDa	
<b>Immunogen Catalog Number:</b> AG2420	<b>Observed MW:</b> 72 kDa, 68 kDa, 50-55 kDa	

## Applications

### Tested Applications:

IF, IHC, IP, WB, ELISA

### Species Specificity:

human, mouse, rat

**Note-IHC: suggested antigen retrieval with TE buffer pH 9.0; (\*) Alternatively, antigen retrieval may be performed with citrate buffer pH 6.0**

### Positive Controls:

**WB:** human liver tissue, HepG2 cells, L02 cells, mouse liver tissue, RAW264.7

**IP:** L02 cells,

**IHC:** human liver tissue, mouse liver tissue

**IF:** L02 cells, HepG2 cells

## Background Information

## Storage

### Storage:

Store at -20°C. Stable for one year after shipment.

### Storage Buffer:

PBS with 0.02% sodium azide and 50% glycerol pH 7.3.

Aliquoting is unnecessary for -20°C storage

\*\*\* 20ul sizes contain 0.1% BSA

For technical support and original validation data for this product please contact:

T: 1 (888) 4PTGLAB (1-888-478-4522) (toll free in USA), or 1(312) 455-8498 (outside USA)

E: proteintech@ptglab.com  
W: ptglab.com

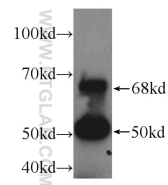
This product is exclusively available under Proteintech Group brand and is not available to purchase from any other manufacturer.

## Selected Validation Data

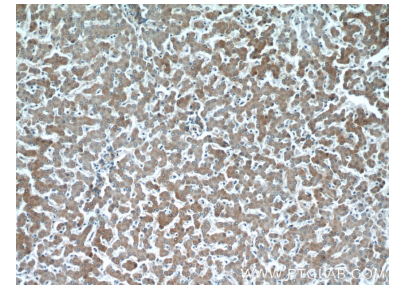


human liver tissue were subjected to SDS PAGE followed by western blot with 11851-1-AP (SERPINA10 antibody) at dilution of 1:500 incubated at room temperature for 1.5 hours.

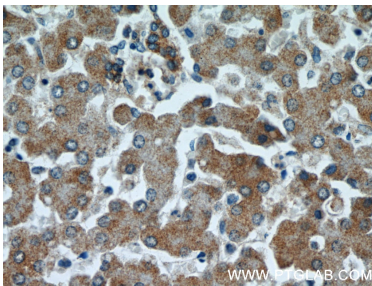
IP result of SERPINA10



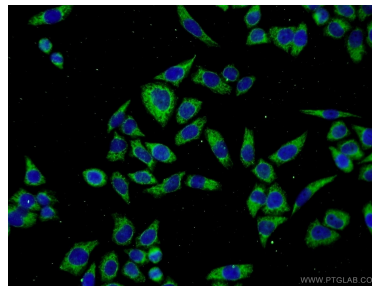
IP Result of anti-SERPINA10 (IP:11851-1-AP, 3ug; Detection:11851-1-AP 1:1000) with L02 cells lysate 2500ug.



Immunohistochemical analysis of paraffin-embedded human liver using 11851-1-AP (SERPINA10 antibody) at dilution of 1:100 (under 10x lens).



Immunohistochemical analysis of paraffin-embedded human liver using 11851-1-AP (SERPINA10 antibody) at dilution of 1:100 (under 40x lens).



Immunofluorescent analysis of L02 cells using 11851-1-AP (SERPINA10 antibody) at dilution of 1:50 and Alexa Fluor 488-conjugated AffiniPure Goat Anti-Rabbit IgG(H+L).