

For Research Use Only

# Maspin Polyclonal antibody

Catalog Number: 11722-1-AP **4 Publications**



## Basic Information

<b>Catalog Number:</b> 11722-1-AP	<b>GenBank Accession Number:</b> BC020713	<b>Purification Method:</b> Antigen affinity purification
<b>Size:</b> 150ul, Concentration: 300 µg/ml by Nanodrop and 150 µg/ml by Bradford method using BSA as the standard;	<b>GeneID (NCBI):</b> 5268	<b>Recommended Dilutions:</b> WB 1:500-1:3000 IHC 1:50-1:500 IF 1:50-1:500
<b>Source:</b> Rabbit	<b>Full Name:</b> serpin peptidase inhibitor, clade B (ovalbumin), member 5	
<b>Isotype:</b> IgG	<b>Calculated MW:</b> 375 aa, 42 kDa	
<b>Immunogen Catalog Number:</b> AG2304	<b>Observed MW:</b> 42 kDa	

## Applications

<b>Tested Applications:</b> FC, IF, IHC, WB, ELISA	<b>Positive Controls:</b> WB : HepG2 cells, A431 cells, HeLa cells
<b>Cited Applications:</b> IF, IHC, WB	<b>IHC :</b> human lung cancer tissue, human breast cancer tissue, human pancreas tissue
<b>Species Specificity:</b> human	<b>IF :</b> A431 cells,
<b>Cited Species:</b> human	

**Note-IHC: suggested antigen retrieval with TE buffer pH 9.0; (\*) Alternatively, antigen retrieval may be performed with citrate buffer pH 6.0**

## Background Information

SERPINB5, also named as PI-5, Maspin and Serpin B5, belongs to the serpin family and Ov-serpin subfamily. It is a tumor suppressor. It blocks the growth, invasion, and metastatic properties of mammary tumors. As it does not undergo the S (stressed) to R (relaxed) conformational transition characteristic of active serpins, SERPINB5 exhibits no serine protease inhibitory activity.

## Notable Publications

Author	Pubmed ID	Journal	Application
Chang-Fu Yang	24262659	Cancer Lett	WB
Jinfeng Zhu	35614040	Cell Death Dis	IF
Hengwei Zhang	28927140	Oncol Lett	WB

## Storage

**Storage:**  
Store at -20°C. Stable for one year after shipment.  
**Storage Buffer:**  
PBS with 0.02% sodium azide and 50% glycerol pH 7.3.  
Aliquoting is unnecessary for -20°C storage

**\*\*\* 20ul sizes contain 0.1% BSA**

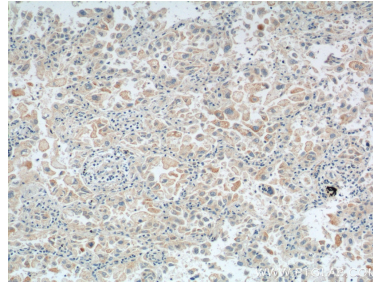
For technical support and original validation data for this product please contact:  
T: 1 (888) 4PTGLAB (1-888-478-4522) (toll free in USA), or 1(312) 455-8498 (outside USA)  
E: proteintech@ptglab.com  
W: ptglab.com

**This product is exclusively available under Proteintech Group brand and is not available to purchase from any other manufacturer.**

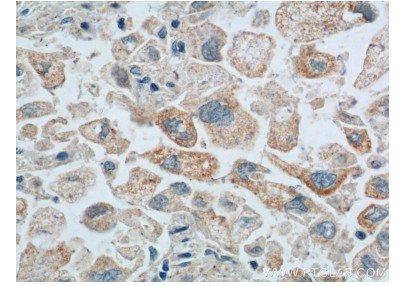
## Selected Validation Data



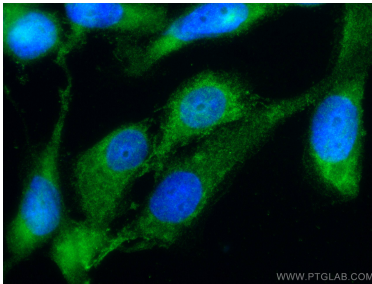
HepG2 cells were subjected to SDS PAGE followed by western blot with 11722-1-AP (Maspin antibody) at dilution of 1:500 incubated at room temperature for 1.5 hours.



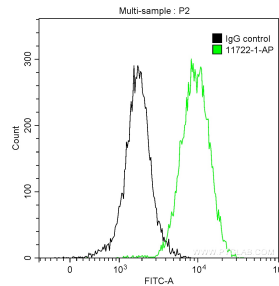
Immunohistochemical analysis of paraffin-embedded human lung cancer tissue slide using 11722-1-AP (Maspin antibody at dilution of 1:200 (under 10x lens). Heat mediated antigen retrieval with Tris-EDTA buffer (pH 9.0).



Immunohistochemical analysis of paraffin-embedded human lung cancer tissue slide using 11722-1-AP (Maspin antibody at dilution of 1:200 (under 40x lens). Heat mediated antigen retrieval with Tris-EDTA buffer (pH 9.0).



Immunofluorescent analysis of (-20°C Ethanol) fixed A431 cells using Maspin antibody (11722-1-AP) at dilution of 1:200 and CoraLite@488-Conjugated AffiniPure Goat Anti-Rabbit IgG(H+L).



1x10<sup>6</sup> A431 cells were intracellularly stained with 0.5 ug Anti-Human Maspin (11722-1-AP) and CoraLite@488-Conjugated AffiniPure Goat Anti-Rabbit IgG(H+L) at dilution 1:1000 (green), and 0.5 ug Control Antibody. Cells were fixed with 90% MeOH .