

For Research Use Only

# MRPL23 Polyclonal antibody

Catalog Number: 11706-1-AP **7 Publications**



## Basic Information

<b>Catalog Number:</b> 11706-1-AP	<b>GenBank Accession Number:</b> BC027710	<b>Purification Method:</b> Antigen affinity purification
<b>Size:</b> 150ul , Concentration: 300 µg/ml by Nanodrop and 173 µg/ml by Bradford method using BSA as the standard;	<b>GeneID (NCBI):</b> 6150	<b>Recommended Dilutions:</b> WB 1:500-1:1000 IHC 1:50-1:500 IF 1:10-1:100
<b>Source:</b> Rabbit	<b>Full Name:</b> mitochondrial ribosomal protein L23	
<b>Isotype:</b> IgG	<b>Calculated MW:</b> 153 aa, 18 kDa	
<b>Immunogen Catalog Number:</b> AG2220	<b>Observed MW:</b> 18 kDa	

## Applications

<b>Tested Applications:</b> IF, IHC, WB, ELISA	<b>Positive Controls:</b> WB : A2780 cells, HEK-293 cells, HeLa cells, MCF-7 cells, PC-3 cells IHC : human liver cancer tissue, IF : PC-3 cells, MCF-7 cells
<b>Cited Applications:</b> WB	
<b>Species Specificity:</b> human	
<b>Cited Species:</b> human, mouse	

**Note-IHC: suggested antigen retrieval with TE buffer pH 9.0; (\*) Alternatively, antigen retrieval may be performed with citrate buffer pH 6.0**

## Background Information

### Notable Publications

Author	Pubmed ID	Journal	Application
Uwe Richter	26504172	J Cell Biol	WB
Christopher B Jackson	30358850	Hum Mol Genet	WB
Ruona Shi	34774773	Genomics Proteomics Bioinformatics	WB

## Storage

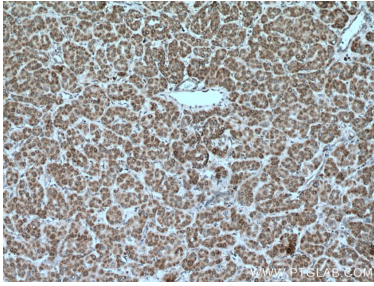
**Storage:**  
Store at -20°C. Stable for one year after shipment.  
**Storage Buffer:**  
PBS with 0.02% sodium azide and 50% glycerol pH 7.3.  
Aliquoting is unnecessary for -20°C storage

\*\*\* 20ul sizes contain 0.1% BSA

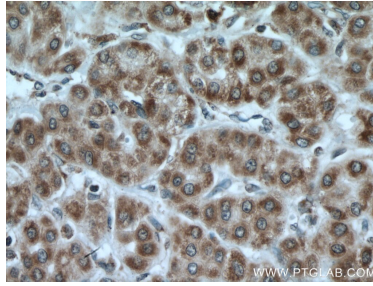
For technical support and original validation data for this product please contact:  
T: 1 (888) 4PTGLAB (1-888-478-4522) (toll free in USA), or 1(312) 455-8498 (outside USA)  
E: proteintech@ptglab.com  
W: ptglab.com

This product is exclusively available under Proteintech Group brand and is not available to purchase from any other manufacturer.

## Selected Validation Data



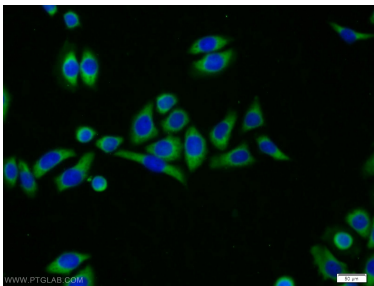
Immunohistochemical analysis of paraffin-embedded human liver cancer tissue slide using 11706-1-AP (MRPL23 antibody) at dilution of 1:200 (under 10x lens). Heat mediated antigen retrieval with Tris-EDTA buffer (pH 9.0).



Immunohistochemical analysis of paraffin-embedded human liver cancer tissue slide using 11706-1-AP (MRPL23 antibody) at dilution of 1:200 (under 40x lens). Heat mediated antigen retrieval with Tris-EDTA buffer (pH 9.0).



A2780 cells were subjected to SDS PAGE followed by western blot with 11706-1-AP (MRPL23 antibody) at dilution of 1:100 incubated at room temperature for 1.5 hours.



Immunofluorescent analysis of PC-3 cells using 11706-1-AP (MRPL23 antibody) at dilution of 1:25 and Alexa Fluor 488-conjugated AffiniPure Goat Anti-Rabbit IgG(H+L).