

For Research Use Only

SERF2 Polyclonal antibody

Catalog Number: 11691-1-AP

Featured Product

2 Publications



Basic Information

Catalog Number: 11691-1-AP	GenBank Accession Number: BC022326	Purification Method: Antigen affinity purification
Size: 150ul , Concentration: 260 µg/ml by Nanodrop;	GeneID (NCBI): 10169	Recommended Dilutions: WB 1:500-1:3000 IP 0.5-4.0 ug for IP and 1:500-1:1000 for WB
Source: Rabbit	Full Name: small EDK-rich factor 2	IF 1:10-1:100
Isotype: IgG	Calculated MW: 59 aa, 7 kDa	
Immunogen Catalog Number: AG2305		

Applications

Tested Applications: IF, IP, WB, ELISA	Positive Controls:
Cited Applications: WB	WB : HepG2 cells,
Species Specificity: human	IP : HepG2 cells,
Cited Species: mouse	IF : HepG2 cells, MCF-7 cells

Background Information

SERF2 belongs to the SERF family. The antibody is specific to SERF2.

Notable Publications

Author	Pubmed ID	Journal	Application
Karen Cleverley	33713180	Mamm Genome	WB
Esther Stroo	37130781	Life Sci Alliance	WB

Storage

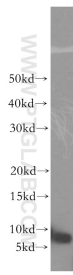
Storage:
Store at -20°C. Stable for one year after shipment.
Storage Buffer:
PBS with 0.02% sodium azide and 50% glycerol pH 7.3.
Aliquoting is unnecessary for -20°C storage

*** 20ul sizes contain 0.1% BSA

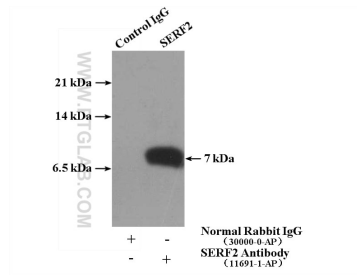
For technical support and original validation data for this product please contact:
T: 1 (888) 4PTGLAB (1-888-478-4522) (toll free in USA), or 1(312) 455-8498 (outside USA)
E: proteintech@ptglab.com
W: ptglab.com

This product is exclusively available under Proteintech Group brand and is not available to purchase from any other manufacturer.

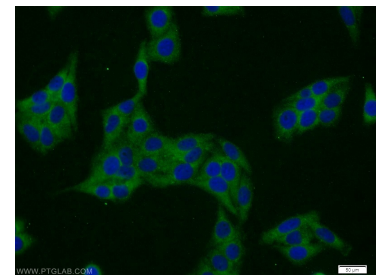
Selected Validation Data



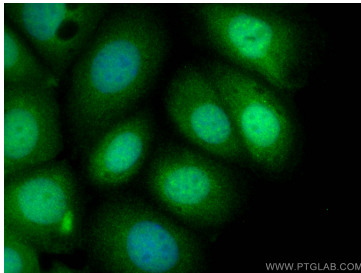
HepG2 cells were subjected to SDS PAGE followed by western blot with 11691-1-AP (SERF2 antibody) at dilution of 1:500 incubated at room temperature for 1.5 hours.



IP Result of anti-SERF2 (IP:11691-1-AP, 4ug; Detection:11691-1-AP 1:500) with HepG2 cells lysate 4000ug.



Immunofluorescent analysis of HepG2 cells using 11691-1-AP (SERF2 antibody) at dilution of 1:25 and Alexa Fluor 488-conjugated AffiniPure Goat Anti-Rabbit IgG(H+L).



Immunofluorescent analysis of (4% PFA) fixed MCF-7 cells using SERF2 antibody (11691-1-AP) at dilution of 1:400 and Coralite®488-Conjugated AffiniPure Goat Anti-Rabbit IgG(H+L).