

For Research Use Only

# PSMB6 Polyclonal antibody

Catalog Number: 11684-2-AP **4 Publications**



## Basic Information

|  |  |   |
|--|--|---|
| <b>Catalog Number:</b><br>11684-2-AP   | <b>GenBank Accession Number:</b><br>BC000835                               | <b>Purification Method:</b><br>Antigen affinity purification                        |
| <b>Size:</b><br>150ul , Concentration: 450 µg/ml by Nanodrop and 227 µg/ml by Bradford method using BSA as the standard; | <b>GeneID (NCBI):</b><br>5694  | <b>Recommended Dilutions:</b><br>WB 1:500-1:2000<br>IHC 1:50-1:500<br>IF 1:50-1:500 |
| <b>Source:</b><br>Rabbit   | <b>Full Name:</b><br>proteasome (prosome, macropain) subunit, beta type, 6 |   |
| <b>Isotype:</b><br>IgG   | <b>Calculated MW:</b><br>239 aa, 25 kDa                                    |   |
| <b>Immunogen Catalog Number:</b><br>AG2296   | <b>Observed MW:</b><br>25 kDa  |   |

## Applications

|  |   |
|--|---|
| <b>Tested Applications:</b><br>IF, IHC, WB, ELISA  | <b>Positive Controls:</b>   |
| <b>Cited Applications:</b><br>WB   | <b>WB:</b> HeLa cells, Caco-2 cells, fetal human brain tissue, human liver tissue, mouse brain tissue, rat brain tissue |
| <b>Species Specificity:</b><br>human, mouse, rat   | <b>IHC:</b> human colon cancer tissue, human gliomas tissue   |
| <b>Cited Species:</b><br>rat, mouse  | <b>IF:</b> HeLa cells,  |
| <b>Note-IHC: suggested antigen retrieval with TE buffer pH 9.0; (*) Alternatively, antigen retrieval may be performed with citrate buffer pH 6.0</b> |   |

## Background Information

PSMB6 (Proteasome subunit beta type-6) is also named as LMPY, Y and belongs to the peptidase T1B family. The proteasome is a multicatalytic proteinase complex which is characterized by its ability to cleave peptides with Arg, Phe, Tyr, Leu, and Glu adjacent to the leaving group at neutral or slightly basic pH. It may also catalyze basal processing of intracellular antigens. It can be up-regulated in anaplastic thyroid cancer cell lines and down-regulated by IFNG/IFN-gamma (at protein level) (PMID:8066462;15613457).

## Notable Publications

| Author     | Pubmed ID | Journal              | Application |
|------------|-----------|----------------------|-------------|
| Xin Xie    | 35710020  | Biochem Pharmacol    | WB          |
| Wenjin Guo | 29723850  | Cell Physiol Biochem | WB          |
| Xinzhi Li  | 37777158  | J Biol Chem          | WB          |

## Storage

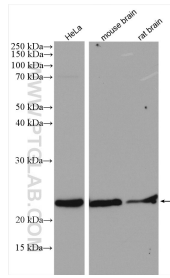
**Storage:**  
Store at -20°C. Stable for one year after shipment.  
**Storage Buffer:**  
PBS with 0.02% sodium azide and 50% glycerol pH 7.3.  
Aliquoting is unnecessary for -20°C storage

\*\*\* 20ul sizes contain 0.1% BSA

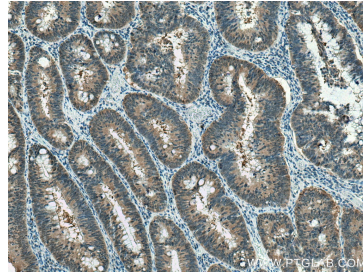
For technical support and original validation data for this product please contact:  
T: 1 (888) 4PTGLAB (1-888-478-4522) (toll free in USA), or 1(312) 455-8498 (outside USA)  
E: proteintech@ptglab.com  
W: ptglab.com

This product is exclusively available under Proteintech Group brand and is not available to purchase from any other manufacturer.

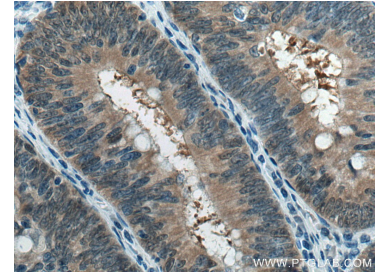
## Selected Validation Data



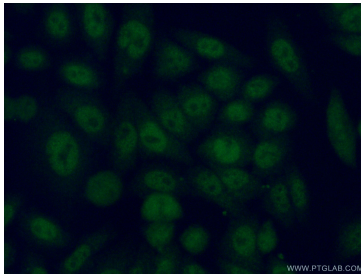
Various lysates were subjected to SDS PAGE followed by western blot with 11684-2-AP (PSMB6 antibody) at dilution of 1:1000 incubated at room temperature for 1.5 hours.



Immunohistochemical analysis of paraffin-embedded human colon cancer tissue slide using 11684-2-AP (PSMB6 antibody) at dilution of 1:200 (under 10x lens). Heat mediated antigen retrieval with Tris-EDTA buffer (pH 9.0).



Immunohistochemical analysis of paraffin-embedded human colon cancer tissue slide using 11684-2-AP (PSMB6 antibody) at dilution of 1:200 (under 40x lens). Heat mediated antigen retrieval with Tris-EDTA buffer (pH 9.0).



Immunofluorescent analysis of (4% PFA) fixed HeLa cells using 11684-2-AP (PSMB6 antibody) at dilution of 1:50 and Alexa Fluor 488-conjugated AffiniPure Goat Anti-Rabbit IgG(H+L).