

For Research Use Only

# MALT1 Polyclonal antibody

Catalog Number: 11660-1-AP **6 Publications**



## Basic Information

|  |  |   |
|--|--|---|
| <b>Catalog Number:</b><br>11660-1-AP   | <b>GenBank Accession Number:</b><br>BC030143   | <b>Purification Method:</b><br>Antigen affinity purification                        |
| <b>Size:</b><br>150ul , Concentration: 400 µg/ml by Nanodrop and 260 µg/ml by Bradford method using BSA as the standard; | <b>GeneID (NCBI):</b><br>10892   | <b>Recommended Dilutions:</b><br>WB 1:500-1:1000<br>IHC 1:20-1:200<br>IF 1:10-1:100 |
| <b>Source:</b><br>Rabbit   | <b>Full Name:</b><br>mucosa associated lymphoid tissue lymphoma translocation gene 1 |   |
| <b>Isotype:</b><br>IgG   | <b>Calculated MW:</b><br>824 aa, 92 kDa  |   |
| <b>Immunogen Catalog Number:</b><br>AG2182   | <b>Observed MW:</b><br>92-100 kDa  |   |

## Applications

**Tested Applications:**  
FC, IF, IHC, WB, ELISA

**Cited Applications:**  
CoIP, IF, IHC, WB

**Species Specificity:**  
human, mouse, rat

**Cited Species:**  
human, rat, mouse

**Note-IHC: suggested antigen retrieval with TE buffer pH 9.0; (\*) Alternatively, antigen retrieval may be performed with citrate buffer pH 6.0**

**Positive Controls:**

**WB :** HeLa cells, HEK-293 cells, mouse testis tissue

**IHC :** human lymphoma tissue,

**IF :** HepG2 cells,

## Background Information

Mucosa-associated lymphoid tissue lymphoma translocation protein 1 belongs to caspase-like protein superfamily. MALT1 plays a potential role in the regulation of apoptosis and induces NFκB activation and required for the normal development of B cells and for the activation of the IKK complex. It acts as a caspase and mediates additional functions related to T cell activation, cleaving both the ubiquitin editing enzyme, TNFAIP3, and the C terminus of BCL10. It has two isoforms. Researches showed that inhibition of MALT1 blocks A20 and BCL10 cleavage, reduces NFκB activity, and decreases the expression of NFκB targets BCLXL.

## Notable Publications

| Author         | Pubmed ID | Journal              | Application |
|----------------|-----------|----------------------|-------------|
| Zhenglin Chang | 35246671  | Food Funct           | IHC         |
| Ke-Hung Tsui   | 33802402  | Biomedicines         | IHC         |
| Zi-Mei Peng    | 36603698  | Arch Biochem Biophys | WB          |

## Storage

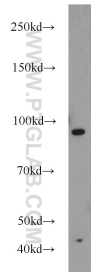
**Storage:**  
Store at -20°C. Stable for one year after shipment.  
**Storage Buffer:**  
PBS with 0.02% sodium azide and 50% glycerol pH 7.3.  
Aliquoting is unnecessary for -20°C storage

\*\*\* 20ul sizes contain 0.1% BSA

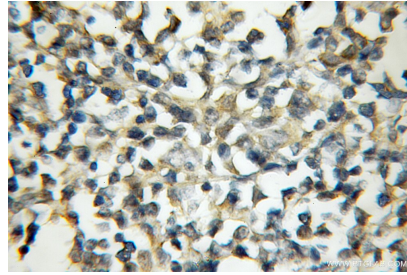
For technical support and original validation data for this product please contact:  
T: 1 (888) 4PTGLAB (1-888-478-4522) (toll free in USA), or 1(312) 455-8498 (outside USA)  
E: proteintech@ptglab.com  
W: ptglab.com

This product is exclusively available under Proteintech Group brand and is not available to purchase from any other manufacturer.

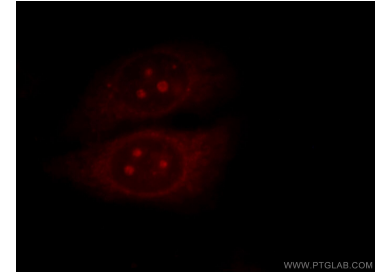
## Selected Validation Data



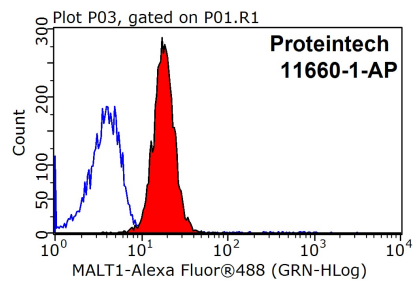
HeLa cells were subjected to SDS PAGE followed by western blot with 11660-1-AP (MALT1 antibody) at dilution of 1:600 incubated at room temperature for 1.5 hours.



Immunohistochemical analysis of paraffin-embedded human lymphoma using 11660-1-AP (MALT1 antibody) at dilution of 1:50 (under 10x lens).



Immunofluorescent analysis of HepG2 cells, using MALT1 antibody 11660-1-AP at 1:25 dilution and Rhodamine-labeled goat anti-rabbit IgG (red).



1X10<sup>6</sup> HeLa cells were stained with 0.2ug MALT1 antibody (11660-1-AP, red) and control antibody (blue). Fixed with 90% MeOH blocked with 3% BSA (30 min). Alexa Fluor 488-conjugated AffiniPure Goat Anti-Rabbit IgG(H+L) with dilution 1:1500.