

For Research Use Only

TFII E Beta Polyclonal antibody

Catalog Number: 11596-1-AP **2 Publications**



Basic Information

Catalog Number: 11596-1-AP	GenBank Accession Number: BC030572	Purification Method: Antigen affinity purification
Size: 150ul, Concentration: 650 µg/ml by Nanodrop and 333 µg/ml by Bradford method using BSA as the standard;	GeneID (NCBI): 2961	Recommended Dilutions: WB 1:1000-1:6000 IF 1:200-1:800
Source: Rabbit	Full Name: general transcription factor IIE, polypeptide 2, beta 34kDa	
Isotype: IgG	Calculated MW: 291 aa, 33 kDa	
Immunogen Catalog Number: AG2136	Observed MW: 34 kDa	

Applications

Tested Applications: IF, WB, ELISA	Positive Controls: WB : K-562 cells, A375 cells, Jurkat cells IF : A375 cells,
Cited Applications: WB	
Species Specificity: human, mouse, rat	
Cited Species: human, mouse	

Background Information

The general transcription factor IIE (TFII E) is an essential component of the eukaryotic RNA polymerase II initiation complex, which plays pivotal roles in initiation of protein-coding gene transcription (PMID: 7829083). Transcription initiation factor IIE comprises two subunits, TFII E-alpha and TFII E-beta, two chains of which together form a tetramer. TFII E-beta is encoded by GTF2E2 gene and contains TFII E beta-DNA binding domain. It mainly functions to recruit TFII H to the initiation complex and stimulate RNA polymerase II kinase activity (PMID: 10792464).

Notable Publications

Author	Pubmed ID	Journal	Application
Xiaolong Qiao	37845349	Cancer Gene Ther	WB
De Cegli Rossella R	23180766	Nucleic Acids Res	WB

Storage

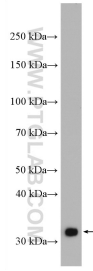
Storage:
Store at -20°C. Stable for one year after shipment.
Storage Buffer:
PBS with 0.02% sodium azide and 50% glycerol pH 7.3.
Aliquoting is unnecessary for -20°C storage

*** 20ul sizes contain 0.1% BSA

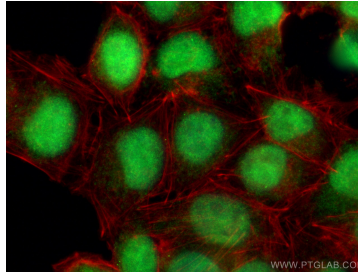
For technical support and original validation data for this product please contact:
T: 1 (888) 4PTGLAB (1-888-478-4522) (toll free in USA), or 1(312) 455-8498 (outside USA)
E: proteintech@ptglab.com
W: ptglab.com

This product is exclusively available under Proteintech Group brand and is not available to purchase from any other manufacturer.

Selected Validation Data



K-562 cells were subjected to SDS PAGE followed by western blot with 11596-1-AP (TFII E beta antibody) at dilution of 1:3000 incubated at room temperature for 1.5 hours.



Immunofluorescent analysis of (4% PFA) fixed A375 cells using TFII E Beta antibody (11596-1-AP) at dilution of 1:400 and CoraLite®488-Conjugated AffiniPure Goat Anti-Rabbit IgG(H+L) (SA00013-2), CL594-Phalloidin (red).