

For Research Use Only

NAT2 Polyclonal antibody

Catalog Number: 11410-1-AP



Basic Information

Catalog Number: 11410-1-AP	GenBank Accession Number: BC015878	Purification Method: Antigen affinity purification
Size: 150ul , Concentration: 500 µg/ml by Nanodrop;	GeneID (NCBI): 10	Recommended Dilutions: WB 1:2000-1:12000 IHC 1:50-1:500
Source: Rabbit	Full Name: N-acetyltransferase 2 (arylamine N-acetyltransferase)	
Isotype: IgG	Calculated MW: 33.5 kDa	
Immunogen Catalog Number: AG1953	Observed MW: 38 kDa	

Applications

Tested Applications:
IHC, WB, ELISA

Species Specificity:
human, mouse, rat

Note-IHC: suggested antigen retrieval with TE buffer pH 9.0; (*) Alternatively, antigen retrieval may be performed with citrate buffer pH 6.0

Positive Controls:

WB : rat liver tissue,

IHC : human small intestine tissue, human breast cancer tissue

Background Information

NAT2 (Arylamine N-acetyltransferase 2) is well-known for its role in phase II metabolism of xenobiotics and drugs (PMID:36156098). NAT2 and its isozyme, arylamine N-acetyltransferase 1 (NAT1), play key roles in the detoxification of carcinogenic arylamines and xenobiotics by catalyzing acetyl-coenzyme A (CoA)-dependent biotransformation of arylamines to N-arylacetamides. Endogenous NAT2 expression is limited to the liver and small and large intestines, suggesting that NAT2 plays organ-specific roles (PMID:24467436).

Storage

Storage:

Store at -20°C. Stable for one year after shipment.

Storage Buffer:

PBS with 0.02% sodium azide and 50% glycerol pH 7.3.

Aliquoting is unnecessary for -20°C storage

***** 20ul sizes contain 0.1% BSA**

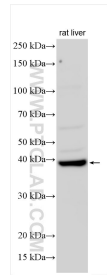
For technical support and original validation data for this product please contact:

T: 1 (888) 4PTGLAB (1-888-478-4522) (toll free in USA), or 1(312) 455-8498 (outside USA)

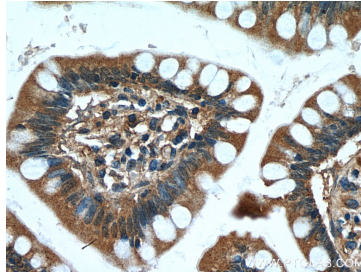
E: proteintech@ptglab.com
W: ptglab.com

This product is exclusively available under Proteintech Group brand and is not available to purchase from any other manufacturer.

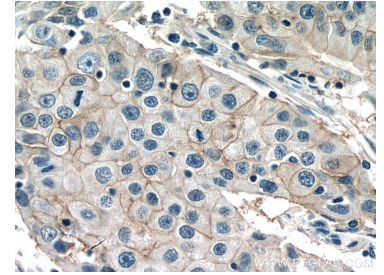
Selected Validation Data



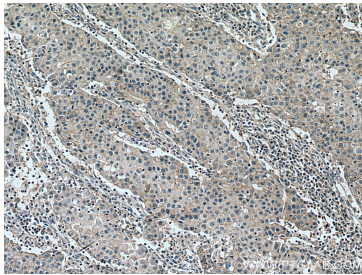
Various lysates were subjected to SDS PAGE followed by western blot with 11410-1-AP (NAT2 antibody) at dilution of 1:6000 incubated at room temperature for 1.5 hours.



Immunohistochemical analysis of paraffin-embedded human small intestine tissue slide using 11410-1-AP (NAT2 antibody) at dilution of 1:200 (under 40x lens).



Immunohistochemical analysis of paraffin-embedded human breast cancer tissue slide using 11410-1-AP (NAT2 antibody) at dilution of 1:200 (under 40x lens). Heat mediated antigen retrieval with Tris-EDTA buffer (pH 9.0).



Immunohistochemical analysis of paraffin-embedded human breast cancer tissue slide using 11410-1-AP (NAT2 antibody) at dilution of 1:200 (under 10x lens). Heat mediated antigen retrieval with Tris-EDTA buffer (pH 9.0).