

For Research Use Only

FGFR1OP Polyclonal antibody

Catalog Number: 11343-1-AP

Featured Product

15 Publications



Basic Information

Catalog Number: 11343-1-AP	GenBank Accession Number: BC011902	Purification Method: Antigen affinity purification
Size: 150ul, Concentration: 900 µg/ml by Nanodrop and 433 µg/ml by Bradford method using BSA as the standard;	GeneID (NCBI): 11116	Recommended Dilutions: WB 1:5000-1:50000 IHC 1:20-1:200 IF 1:50-1:500
Source: Rabbit	UNIPROT ID: O95684	
Isotype: IgG	Full Name: FGFR1 oncogene partner	
Immunogen Catalog Number: AG1891	Calculated MW: 43 kDa	
	Observed MW: 50 kDa	

Applications

Tested Applications: WB, IF, IHC, ELISA	Positive Controls: WB : HEK-293 cells, mouse heart tissue, U-937 cells, HL-60 cells, MCF-7 cells, HeLa cells IHC : human lymphoma tissue, IF : HeLa cells, HEK-293 cells
Cited Applications: WB, IF, IHC	
Species Specificity: human, mouse, rat	
Cited Species: human, mouse, zebrafish	

Note-IHC: suggested antigen retrieval with TE buffer pH 9.0; (*) Alternatively, antigen retrieval may be performed with citrate buffer pH 6.0

Background Information

The fibroblast growth factor receptor 1 oncogene partner (FGFR1OP), FOP, is a centrosomal protein that is involved in the anchoring of microtubules to subcellular structures. Three isoforms have been produced by alternative splicing. A chromosomal aberration involving FGFR1OP may be a cause of stem cell myeloproliferative disorder (MPD). MPD is characterized by myeloid hyperplasia, eosinophilia and T-cell or B-cell lymphoblastic lymphoma and progresses to acute myeloid leukemia.

Notable Publications

Author	Pubmed ID	Journal	Application
Abraham Nguyen	36322399	Mol Biol Cell	IF
Tomoharu Kanie	28625565	Dev Cell	WB
Dhivya Kumar	34241634	J Cell Biol	IF

Storage

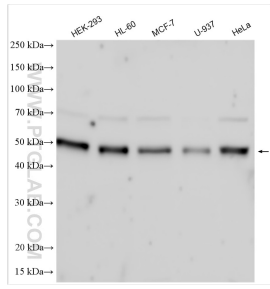
Storage:
Store at -20°C. Stable for one year after shipment.
Storage Buffer:
PBS with 0.02% sodium azide and 50% glycerol pH 7.3.
Aliquoting is unnecessary for -20°C storage

*** 20ul sizes contain 0.1% BSA

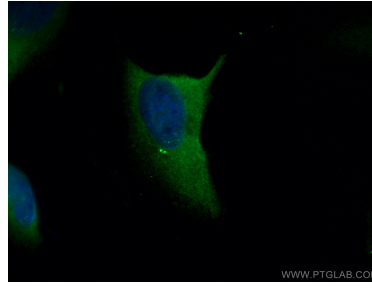
For technical support and original validation data for this product please contact:
T: 1 (888) 4PTGLAB (1-888-478-4522) (toll free in USA), or 1(312) 455-8498 (outside USA)
E: proteintech@ptglab.com
W: ptglab.com

This product is exclusively available under Proteintech Group brand and is not available to purchase from any other manufacturer.

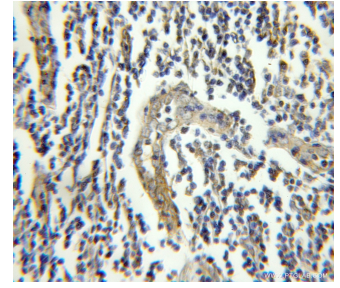
Selected Validation Data



Various lysates were subjected to SDS PAGE followed by western blot with 11343-1-AP (FGFR1OP antibody) at dilution of 1:15000 incubated at room temperature for 1.5 hours.



Immunofluorescent analysis of (-20°C Methanol) fixed HeLa cells using FGFR1OP antibody (11343-1-AP) at dilution of 1:100 and CoraLite® 488-Conjugated AffiniPure Goat Anti-Rabbit IgG(H+L).



Immunohistochemical analysis of paraffin-embedded human lymphoma using 11343-1-AP (FGFR1OP antibody) at dilution of 1:50 (under 10x lens).