

For Research Use Only

ILVBL Polyclonal antibody

Catalog Number: 11220-1-AP



Basic Information

Catalog Number: 11220-1-AP	GenBank Accession Number: BC011761	Purification Method: Antigen affinity purification
Size: 150ul , Concentration: 700 µg/ml by Nanodrop and 333 µg/ml by Bradford method using BSA as the standard;	GeneID (NCBI): 10994	Recommended Dilutions: WB 1:500-1:3000 IHC 1:50-1:500 IF 1:10-1:100
Source: Rabbit	Full Name: ilvB (bacterial acetolactate synthase) like	
Isotype: IgG	Calculated MW: 68 kDa	
Immunogen Catalog Number: AG1729	Observed MW: 60-65 kDa	

Applications

Tested Applications:

IF, IHC, WB, ELISA

Species Specificity:

human, mouse, rat

Note-IHC: suggested antigen retrieval with TE buffer pH 9.0; (*) Alternatively, antigen retrieval may be performed with citrate buffer pH 6.0

Positive Controls:

WB: A549 cells, human thyroid gland tissue, HepG2 cells, HeLa cells

IHC: human colon cancer tissue,

IF: HeLa cells,

Background Information

Storage

Storage:

Store at -20°C. Stable for one year after shipment.

Storage Buffer:

PBS with 0.02% sodium azide and 50% glycerol pH 7.3.

Aliquoting is unnecessary for -20°C storage

*** 20ul sizes contain 0.1% BSA

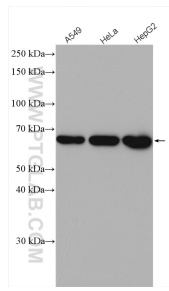
For technical support and original validation data for this product please contact:

T: 1 (888) 4PTGLAB (1-888-478-4522) (toll free in USA), or 1(312) 455-8498 (outside USA)

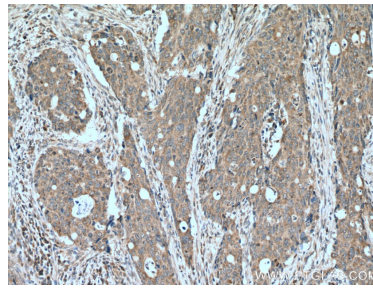
E: proteintech@ptglab.com
W: ptglab.com

This product is exclusively available under Proteintech Group brand and is not available to purchase from any other manufacturer.

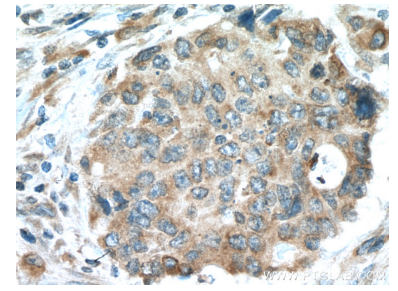
Selected Validation Data



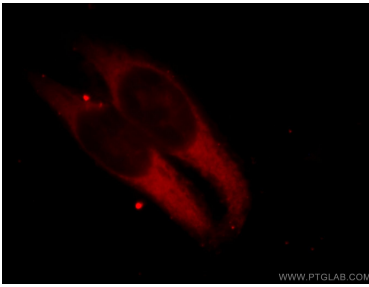
Various lysates were subjected to SDS PAGE followed by western blot with 11220-1-AP (ILVBL antibody) at dilution of 1:1500 incubated at room temperature for 1.5 hours.



Immunohistochemical analysis of paraffin-embedded human colon cancer tissue slide using 11220-1-AP (ILVBL antibody) at dilution of 1:200 (under 10x lens). Heat mediated antigen retrieval with Tris-EDTA buffer (pH 9.0).



Immunohistochemical analysis of paraffin-embedded human colon cancer tissue slide using 11220-1-AP (ILVBL antibody) at dilution of 1:200 (under 40x lens). Heat mediated antigen retrieval with Tris-EDTA buffer (pH 9.0).



Immunofluorescent analysis of HeLa cells, using ILVBL antibody 11220-1-AP at 1:25 dilution and Rhodamine-labeled goat anti-rabbit IgG (red).