

For Research Use Only

# SGK2 Polyclonal antibody

Catalog Number: 11185-1-AP

Featured Product

1 Publications



## Basic Information

<b>Catalog Number:</b> 11185-1-AP	<b>GenBank Accession Number:</b> BC014037	<b>Purification Method:</b> Antigen affinity purification
<b>Size:</b> 150ul , Concentration: 600 µg/ml by Nanodrop and 300 µg/ml by Bradford method using BSA as the standard;	<b>GeneID (NCBI):</b> 10110	<b>Recommended Dilutions:</b> WB 1:200-1:1000 IHC 1:100-1:400
<b>Source:</b> Rabbit	<b>Full Name:</b> serum/glucocorticoid regulated kinase 2	
<b>Isotype:</b> IgG	<b>Calculated MW:</b> 48 kDa	
<b>Immunogen Catalog Number:</b> AG1669		

## Applications

<b>Tested Applications:</b> IHC, WB, ELISA	<b>Positive Controls:</b>
<b>Cited Applications:</b> WB	WB : human placenta tissue, mouse pancreas tissue
<b>Species Specificity:</b> human, mouse, rat	IHC : human pancreas cancer tissue,
<b>Cited Species:</b> mouse	

**Note-IHC: suggested antigen retrieval with TE buffer pH 9.0; (\*) Alternatively, antigen retrieval may be performed with citrate buffer pH 6.0**

## Background Information

### Notable Publications

Author	Pubmed ID	Journal	Application
Seonghee Jung	31234698	Autophagy	WB

## Storage

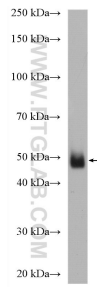
**Storage:**  
Store at -20°C. Stable for one year after shipment.  
**Storage Buffer:**  
PBS with 0.02% sodium azide and 50% glycerol pH 7.3.  
Aliquoting is unnecessary for -20°C storage

\*\*\* 20ul sizes contain 0.1% BSA

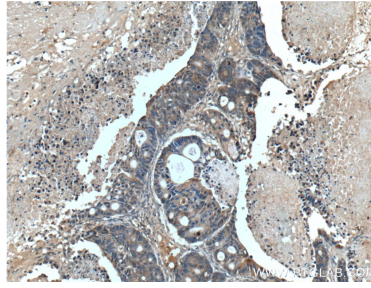
For technical support and original validation data for this product please contact:  
T: 1 (888) 4PTGLAB (1-888-478-4522) (toll free in USA), or 1(312) 455-8498 (outside USA) E: proteintech@ptglab.com W: ptglab.com

This product is exclusively available under Proteintech Group brand and is not available to purchase from any other manufacturer.

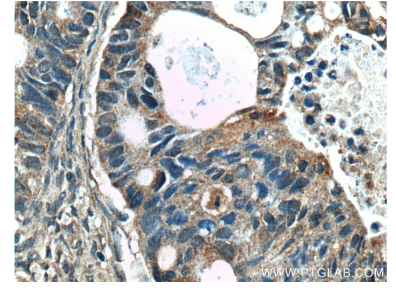
## Selected Validation Data



human placenta tissue were subjected to SDS PAGE followed by western blot with 11185-1-AP (SGK2 antibody) at dilution of 1:300 incubated at room temperature for 1.5 hours.



Immunohistochemical analysis of paraffin-embedded human pancreas cancer tissue slide using 11185-1-AP (SGK2 Antibody) at dilution of 1:200 (under 10x lens).



Immunohistochemical analysis of paraffin-embedded human pancreas cancer tissue slide using 11185-1-AP (SGK2 Antibody) at dilution of 1:200 (under 40x lens).