

For Research Use Only

# Hephaestin Polyclonal antibody

Catalog Number: 11148-1-AP **2 Publications**



## Basic Information

<b>Catalog Number:</b> 11148-1-AP	<b>GenBank Accession Number:</b> BC011561	<b>Purification Method:</b> Antigen affinity purification
<b>Size:</b> 150ul , Concentration: 300 µg/ml by Nanodrop and 167 µg/ml by Bradford method using BSA as the standard;	<b>GeneID (NCBI):</b> 9843	<b>Recommended Dilutions:</b> IHC 1:20-1:200
<b>Source:</b> Rabbit	<b>Full Name:</b> hephaestin	
<b>Isotype:</b> IgG	<b>Calculated MW:</b> 130 kDa	
<b>Immunogen Catalog Number:</b> AG1604		

## Applications

<b>Tested Applications:</b> IHC, ELISA	<b>Positive Controls:</b> IHC : human pancreas cancer tissue,
<b>Cited Applications:</b> WB	
<b>Species Specificity:</b> human	
<b>Cited Species:</b> human, rat	
<b>Note-IHC: suggested antigen retrieval with TE buffer pH 9.0; (*) Alternatively, antigen retrieval may be performed with citrate buffer pH 6.0</b>	

## Background Information

Hephaestin, also named as KIAA0698, belongs to the multicopper oxidase family. It is provided as ferroxidase of cellular iron export. HEPH is implicated in iron homeostasis and may mediate iron efflux associated to ferroportin 1. HEPE is active in placenta but may not play a key role in placental iron transport.

## Notable Publications

Author	Pubmed ID	Journal	Application
Xin Li	36117765	Chin Herb Med	WB
Li Yan-Qin YQ	22170436	Cell Biochem Funct	WB

## Storage

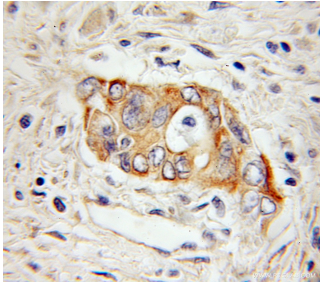
**Storage:**  
Store at -20°C. Stable for one year after shipment.  
**Storage Buffer:**  
PBS with 0.02% sodium azide and 50% glycerol pH 7.3.  
Aliquoting is unnecessary for -20°C storage

\*\*\* 20ul sizes contain 0.1% BSA

For technical support and original validation data for this product please contact:  
T: 1 (888) 4PTGLAB (1-888-478-4522) (toll free in USA), or 1(312) 455-8498 (outside USA)  
E: proteintech@ptglab.com  
W: ptglab.com

This product is exclusively available under Proteintech Group brand and is not available to purchase from any other manufacturer.

## Selected Validation Data



Immunohistochemical analysis of paraffin-embedded human pancreas cancer using 11148-1-AP (Hephaestin antibody) at dilution of 1:50 (under 10x lens).