

## PTGES2 Polyclonal antibody

Catalog Number: 10881-1-AP

Featured Product

11 Publications

## Basic Information

## Catalog Number:

10881-1-AP

## Size:

150ul, Concentration: 400 µg/ml by Nanodrop and 133 µg/ml by Bradford method using BSA as the standard;

## Source:

Rabbit

## Isotype:

IgG

## Immunogen Catalog Number:

AG1329

## GenBank Accession Number:

BC011613

## GeneID (NCBI):

80142

## UNIPROT ID:

Q9H7Z7

## Full Name:

prostaglandin E synthase 2

## Calculated MW:

42 kDa

## Observed MW:

30-35 kDa, 45 kDa

## Purification Method:

Antigen affinity purification

## Recommended Dilutions:

WB 1:500-1:1000

IP 0.5-4.0 µg for 1.0-3.0 mg of total protein lysate

IHC 1:20-1:200

IF 1:10-1:100

## Applications

## Tested Applications:

WB, IP, IF, IHC, ELISA

## Cited Applications:

WB, IHC

## Species Specificity:

human, mouse, rat

## Cited Species:

human, rat, mouse, Caenorhabditis elegans

**Note-IHC: suggested antigen retrieval with TE buffer pH 9.0; (\*) Alternatively, antigen retrieval may be performed with citrate buffer pH 6.0**

## Positive Controls:

**WB**: HeLa cells, HEK-293 cells, HepG2 cells, human stomach tissue, mouse heart tissue

**IP**: mouse heart tissue,

**IHC**: human breast cancer tissue, human colon cancer tissue, human heart tissue

**IF**: HeLa cells, HepG2 cells

## Background Information

PTGES2 (Prostaglandin E synthase 2) catalyzes the conversion of unstable intermediate of prostaglandin E2 H2 (PGH2) into the more stable prostaglandin E2 (PGE2) form. Its predicted size is 42 kDa, but it was detected one band of 35 kDa in the prostate and two bands of 30 kDa, 50 kDa in liver by western blot (PMID:17566096). PTGES2 protein is a homotetramer, whereas two PTGES2 molecules each form a strongly interacting dimer (PMID:19268562).

## Notable Publications

Author	Pubmed ID	Journal	Application
Takayuki Nagano	34610503	J Neuroimmunol	WB
Linbin Dai	34500034	Brain Behav Immun	WB
Yongyan Sun	30307357	Int J Radiat Biol	WB

## Storage

## Storage:

Store at -20°C. Stable for one year after shipment.

## Storage Buffer:

PBS with 0.02% sodium azide and 50% glycerol pH 7.3.

Aliquoting is unnecessary for -20°C storage

\*\*\* 20ul sizes contain 0.1% BSA

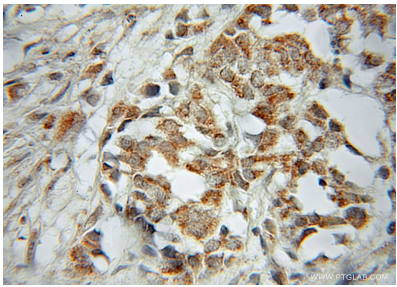
For technical support and original validation data for this product please contact:

T: 1 (888) 4PTGLAB (1-888-478-4522) (toll free in USA), or 1(312) 455-8498 (outside USA)

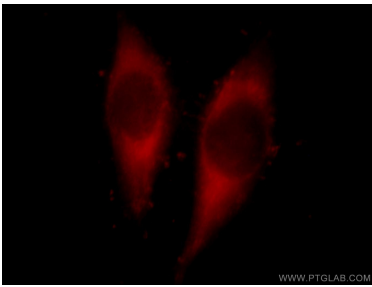
E: [proteintech@ptglab.com](mailto:proteintech@ptglab.com)  
 W: [ptglab.com](http://ptglab.com)

This product is exclusively available under Proteintech Group brand and is not available to purchase from any other manufacturer.

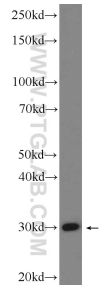
Selected Validation Data



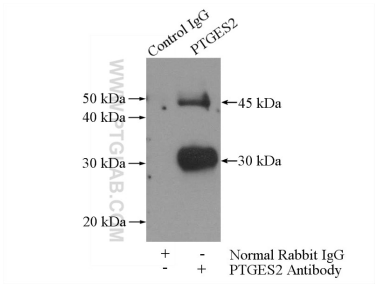
Immunohistochemical analysis of paraffin-embedded human breast cancer using 10881-1-AP (PTGES2 antibody) at dilution of 1:50 (under 40x lens).



Immunofluorescent analysis of HeLa cells, using PTGES2 antibody 10881-1-AP at 1:25 dilution and Rhodamine-labeled goat anti-rabbit IgG (red).



HeLa cells were subjected to SDS PAGE followed by western blot with 10881-1-AP (PTGES2 Antibody) at dilution of 1:600 incubated at room temperature for 1.5 hours.



IP result of anti-PTGES2 (IP:10881-1-AP, 4ug; Detection:10881-1-AP 1:500) with mouse heart tissue lysate 4000ug.