

For Research Use Only

DEDD Polyclonal antibody

Catalog Number: 10816-1-AP **1 Publications**



Basic Information

Catalog Number: 10816-1-AP	GenBank Accession Number: BC013910	Purification Method: Antigen affinity purification
Size: 150ul , Concentration: 247 µg/ml by Bradford method using BSA as the standard;	GeneID (NCBI): 9191	Recommended Dilutions: IHC 1:20-1:200
Source: Rabbit	Full Name: death effector domain containing	
Isotype: IgG	Calculated MW: 37 kDa	
Immunogen Catalog Number: AG1195		

Applications

Tested Applications: IHC, ELISA	Positive Controls: IHC : human prostate cancer tissue,
Cited Applications: IHC	
Species Specificity: human	
Cited Species: human	
Note-IHC: suggested antigen retrieval with TE buffer pH 9.0; (*) Alternatively, antigen retrieval may be performed with citrate buffer pH 6.0	

Background Information

DEDD, a member of a family of death effector domain-containing proteins, plays crucial roles in mediating apoptosis, regulating cell cycle, and inhibiting cell mitosis. DEDD may be a novel tumor repressor, which impedes metastasis by reversing the epithelial-mesenchymal transition (EMT) process in breast and colon cancers (PMID: 24839027).

Notable Publications

Author	Pubmed ID	Journal	Application
Qi Lv	24839027	Methods Mol Biol	IHC

Storage

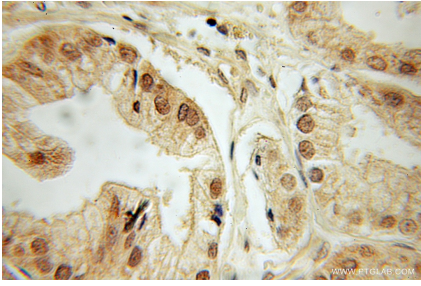
Storage:
Store at -20°C. Stable for one year after shipment.
Storage Buffer:
PBS with 0.02% sodium azide and 50% glycerol pH 7.3.
Aliquoting is unnecessary for -20°C storage

*** 20ul sizes contain 0.1% BSA

For technical support and original validation data for this product please contact:
T: 1 (888) 4PTGLAB (1-888-478-4522) (toll free in USA), or 1(312) 455-8498 (outside USA)
E: proteintech@ptglab.com
W: ptglab.com

This product is exclusively available under Proteintech Group brand and is not available to purchase from any other manufacturer.

Selected Validation Data



Immunohistochemical analysis of paraffin-embedded human prostate cancer using 10816-1-AP (DEDD antibody) at dilution of 1:50 (under 10x lens).