

For Research Use Only

EEF1E1 Polyclonal antibody

Catalog Number: 10805-1-AP

Featured Product

3 Publications



Basic Information

Catalog Number: 10805-1-AP	GenBank Accession Number: BC005291	Purification Method: Antigen affinity purification
Size: 150ul , Concentration: 400 µg/ml by Nanodrop;	GeneID (NCBI): 9521	Recommended Dilutions: WB 1:500-1:2000 IHC 1:20-1:200
Source: Rabbit	Full Name: eukaryotic translation elongation factor 1 epsilon 1	
Isotype: IgG	Calculated MW: 20 kDa	
Immunogen Catalog Number: AG1092	Observed MW: 20 kDa	

Applications

Tested Applications:
IHC, WB, ELISA

Cited Applications:
IF, WB

Species Specificity:
human, mouse, rat

Cited Species:
human

Positive Controls:

WB : HEK-293 cells, HeLa cells, human testis tissue, Jurkat cells, HepG2 cells, SKOV-3 cells, mouse testis tissue, rat testis tissue

IHC : human breast cancer tissue,

Note-IHC: suggested antigen retrieval with TE buffer pH 9.0; (*) Alternatively, antigen retrieval may be performed with citrate buffer pH 6.0

Background Information

During the translation processes, aminoacyl-tRNA synthetases (ARSs) ligate specific amino acids to tRNAs. Together with non-enzymatic proteins called ARS-interacting multifunctional proteins (AIMPs), the ARSs form a macromolecular complex [PMID:15286174]. This complex has an essential role in protein synthesis, but also in other biological processes including angiogenesis, apoptosis, and inflammation. [PMID:21789020] AIMP3 is not only associated with the multi-tRNA synthetase complex via its specific interaction with methionyl-tRNA synthetase, but also works as a tumor suppressor by interacting with ATM, the upstream kinase of p53 [PMID:18343821].

Notable Publications

Author	Pubmed ID	Journal	Application
Krishnendu Khan	36037331	Proc Natl Acad Sci U S A	WB,IF
J J David Ho	34644561	Cell Rep	WB
Liting Ding	33538115	J Cell Mol Med	WB

Storage

Storage:

Store at -20°C. Stable for one year after shipment.

Storage Buffer:

PBS with 0.02% sodium azide and 50% glycerol pH 7.3.

Aliquoting is unnecessary for -20°C storage

*** 20ul sizes contain 0.1% BSA

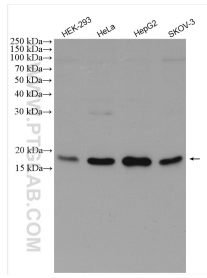
For technical support and original validation data for this product please contact:

T: 1 (888) 4PTGLAB (1-888-478-4522) (toll free in USA), or 1(312) 455-8498 (outside USA)

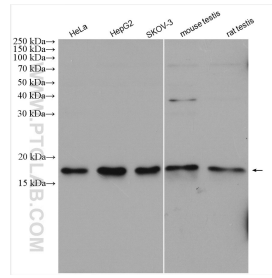
E: proteintech@ptglab.com
W: ptglab.com

This product is exclusively available under Proteintech Group brand and is not available to purchase from any other manufacturer.

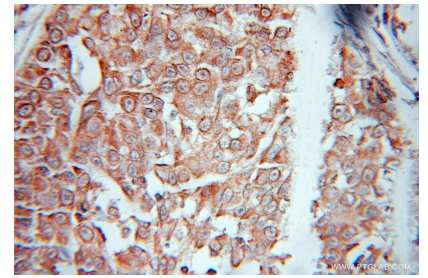
Selected Validation Data



Various lysates were subjected to SDS PAGE followed by western blot with 10805-1-AP (EEF1E1 antibody) at dilution of 1:1000 incubated at room temperature for 1.5 hours.



Various lysates were subjected to SDS PAGE followed by western blot with 10805-1-AP (EEF1E1 antibody) at dilution of 1:2000 incubated at room temperature for 1.5 hours.



Immunohistochemical analysis of paraffin-embedded human breast cancer using 10805-1-AP (EEF1E1 antibody) at dilution of 1:10 (under 10x lens).