

For Research Use Only

PRPF4 Polyclonal antibody

Catalog Number: 10728-1-AP **3 Publications**



Basic Information

| | | |
|--|--|---|
| Catalog Number: 10728-1-AP | GenBank Accession Number: BC001588 | Purification Method: Antigen affinity purification |
| Size: 150ul , Concentration: 500 µg/ml by Nanodrop and 300 µg/ml by Bradford method using BSA as the standard; | GeneID (NCBI): 9128 | Recommended Dilutions: WB 1:1000-1:4000 IHC 1:10-1:100 |
| Source: Rabbit | Full Name: PRP4 pre-mRNA processing factor 4 homolog (yeast) | |
| Isotype: IgG | Calculated MW: 58 kDa | |
| Immunogen Catalog Number: AG1193 | Observed MW: 58 kDa | |

Applications

| | |
|---|---|
| Tested Applications: IHC, WB, ELISA | Positive Controls: |
| Cited Applications: WB | WB : HeLa cells, Raji cells, HEK-293 cells, HepG2 cells, K-562 cells |
| Species Specificity: human | IHC : human ovary tumor tissue, |
| Cited Species: human, mouse | |

Note-IHC: suggested antigen retrieval with TE buffer pH 9.0; (*) Alternatively, antigen retrieval may be performed with citrate buffer pH 6.0

Background Information

PRPF4, also named as U4/U6 small nuclear ribonucleoprotein Prp4, is a 522 amino acid protein, which contains seven WD repeats. PRPF4 localizes in the Nucleus speckle. PRPF4 participates in pre-mRNA splicing and is a part of the U4/U5/U6 tri-snRNP complex, one of the building blocks of the spliceosome. PRPF4-mediated phosphorylation of KLF13 plays a role in the regulation of CCL5 expression in T Lymphocytes

Notable Publications

| Author | Pubmed ID | Journal | Application |
|----------------------|-----------|-------------------|-------------|
| Tanackovic Goranka G | 21378395 | Hum Mol Genet | WB |
| Bangming Jin | 37395406 | Nucleic Acids Res | WB |
| Li Ming M | 20026604 | J Biol Chem | WB |

Storage

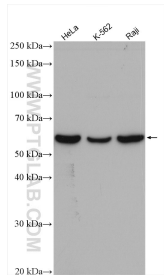
Storage:
Store at -20°C. Stable for one year after shipment.
Storage Buffer:
PBS with 0.02% sodium azide and 50% glycerol pH 7.3.
Aliquoting is unnecessary for -20°C storage

***** 20ul sizes contain 0.1% BSA**

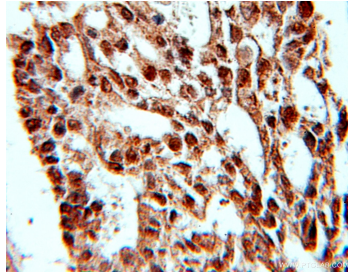
For technical support and original validation data for this product please contact:
T: 1 (888) 4PTGLAB (1-888-478-4522) (toll free in USA), or 1(312) 455-8498 (outside USA)
E: proteintech@ptglab.com
W: ptglab.com

This product is exclusively available under Proteintech Group brand and is not available to purchase from any other manufacturer.

Selected Validation Data



Various lysates were subjected to SDS PAGE followed by western blot with 10728-1-AP (PRPF4 antibody) at dilution of 1:2000 incubated at room temperature for 1.5 hours.



Immunohistochemical analysis of paraffin-embedded human ovary tumor using 10728-1-AP (PRPF4 antibody) at dilution of 1:10 (under 10x lens).