

For Research Use Only

# STRADB Polyclonal antibody

Catalog Number: 10688-1-AP



## Basic Information

<b>Catalog Number:</b> 10688-1-AP	<b>GenBank Accession Number:</b> BC008302	<b>Purification Method:</b> Antigen affinity purification
<b>Size:</b> 150ul , Concentration: 300 µg/ml by Nanodrop and 220 µg/ml by Bradford method using BSA as the standard;	<b>GeneID (NCBI):</b> 55437	<b>Recommended Dilutions:</b> WB 1:200-1:1000 IHC 1:100-1:400
<b>Source:</b> Rabbit	<b>Full Name:</b> STE20-related kinase adaptor beta	
<b>Isotype:</b> IgG	<b>Calculated MW:</b> 47 kDa	
<b>Immunogen Catalog Number:</b> AG1040	<b>Observed MW:</b> 28-31 kDa, 38-42 kDa	

## Applications

<b>Tested Applications:</b> IHC, WB, ELISA	<b>Positive Controls:</b> WB : Raji cells, mouse heart tissue IHC : human heart tissue,
<b>Species Specificity:</b> human, mouse, rat	
<b>Note-IHC: suggested antigen retrieval with TE buffer pH 9.0; (*) Alternatively, antigen retrieval may be performed with citrate buffer pH 6.0</b>	

## Background Information

The 418 amino acid STRADB protein, which is also named as ALS2CR2 and ILPIP, contains a putative N-terminal ATP-binding site, a protein kinase domain, and several C-terminal phosphorylation sites. STRADB potentiates the antiapoptotic activity of XIAP by enhancing XIAP-mediated activation of JNK1 and other JNK family members, but not by modulating XIAP-mediated caspase inhibition. This protein has 3 isoforms produced by alternative splicing with the MW of 47 kDa, 42 kDa and 31 kDa.

## Storage

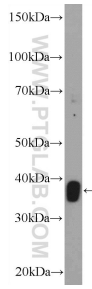
**Storage:**  
Store at -20°C. Stable for one year after shipment.  
**Storage Buffer:**  
PBS with 0.02% sodium azide and 50% glycerol pH 7.3.  
Aliquoting is unnecessary for -20°C storage

\*\*\* 20ul sizes contain 0.1% BSA

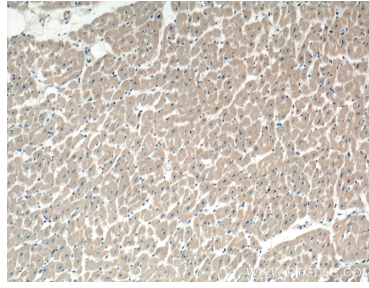
For technical support and original validation data for this product please contact:  
T: 1 (888) 4PTGLAB (1-888-478-4522) (toll free in USA), or 1(312) 455-8498 (outside USA)  
E: proteintech@ptglab.com  
W: ptglab.com

This product is exclusively available under Proteintech Group brand and is not available to purchase from any other manufacturer.

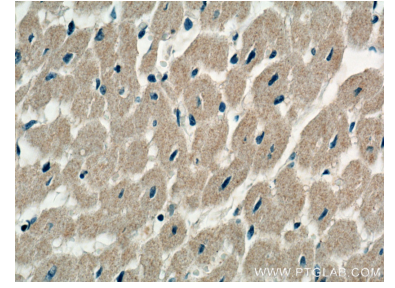
## Selected Validation Data



Raji cells were subjected to SDS PAGE followed by western blot with 10688-1-AP (STRADB Antibody) at dilution of 1:300 incubated at 4 degree celsius over night.



Immunohistochemical analysis of paraffin-embedded human heart tissue slide using 10688-1-AP (STRADB Antibody) at dilution of 1:200 (under 10x lens).



Immunohistochemical analysis of paraffin-embedded human heart tissue slide using 10688-1-AP (STRADB Antibody) at dilution of 1:200 (under 40x lens).