

For Research Use Only

# GYS1 Polyclonal antibody

Catalog Number: 10566-1-AP

Featured Product

16 Publications



## Basic Information

### Catalog Number:

10566-1-AP

### Size:

150ul, Concentration: 550 µg/ml by Nanodrop and 360 µg/ml by Bradford method using BSA as the standard;

### Source:

Rabbit

### Isotype:

IgG

### Immunogen Catalog Number:

AG0857

### GenBank Accession Number:

BC007688

### GeneID (NCBI):

2997

### UNIPROT ID:

P13807

### Full Name:

glycogen synthase 1 (muscle)

### Calculated MW:

84 kDa

### Observed MW:

84 kDa

### Purification Method:

Antigen affinity purification

### Recommended Dilutions:

WB 1:1000-1:4000

IP 0.5-4.0 µg for 1.0-3.0 mg of total protein lysate

IHC 1:50-1:500

IF 1:50-1:500

## Applications

### Tested Applications:

FC, IF, IHC, IP, WB, ELISA

### Cited Applications:

IF, IHC, WB

### Species Specificity:

human, mouse, rat

### Cited Species:

human, rat, mouse

**Note-IHC: suggested antigen retrieval with TE buffer pH 9.0; (\*) Alternatively, antigen retrieval may be performed with citrate buffer pH 6.0**

### Positive Controls:

**WB** : HeLa cells, K-562 cells, Jurkat cells, mouse skeletal muscle tissue, rat heart tissue, rat skeletal muscle tissue

**IP** : mouse skeletal muscle tissue,

**IHC** : human liver tissue, human skeletal muscle tissue, human prostate cancer tissue

**IF** : HepG2 cells,

## Background Information

GYS1(Glycogen [starch] synthase, muscle) is the the rate limiting enzyme of the insulin-induced glycogenesis, transferring glucose units from UDP-Glc to a glycogen primer. It catalyzes the linear addition of glucose residues to the branching structure of glycogen, providing a convenient store of glucose for times of metabolic need. This protein has 2 isoforms produced by alternative splicing.

## Notable Publications

Author	Pubmed ID	Journal	Application
Teresa W-M Fan	36150727	J Immunol	
Zejian Liu	36063868	Metabolism	WB
Miyuki Doi	36353228	Front Endocrinol (Lausanne)	IHC

## Storage

### Storage:

Store at -20°C. Stable for one year after shipment.

### Storage Buffer:

PBS with 0.02% sodium azide and 50% glycerol pH 7.3.

Aliquoting is unnecessary for -20°C storage

\*\*\* 20ul sizes contain 0.1% BSA

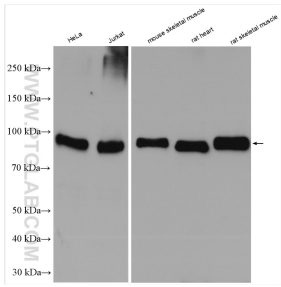
For technical support and original validation data for this product please contact:

T: 1 (888) 4PTGLAB (1-888-478-4522) (toll free in USA), or 1(312) 455-8498 (outside USA)

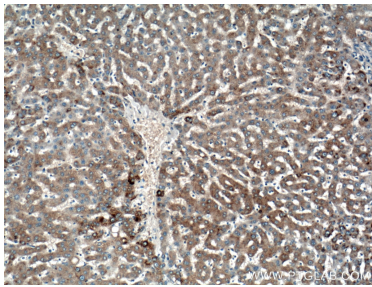
E: [proteintech@ptglab.com](mailto:proteintech@ptglab.com)  
W: [ptglab.com](http://ptglab.com)

This product is exclusively available under Proteintech Group brand and is not available to purchase from any other manufacturer.

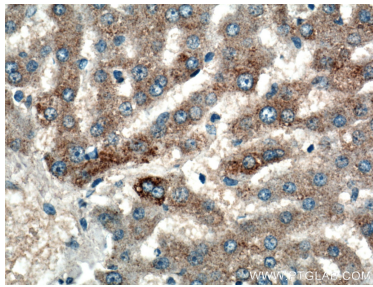
Selected Validation Data



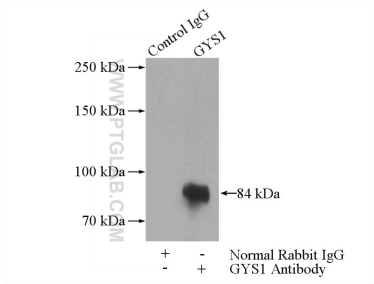
Various lysates were subjected to SDS PAGE followed by western blot with 10566-1-AP (GYS1 antibody) at dilution of 1:2000 incubated at room temperature for 1.5 hours.



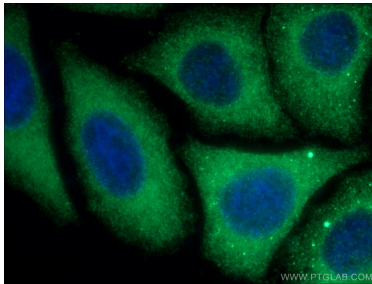
Immunohistochemical analysis of paraffin-embedded human liver tissue slide using 10566-1-AP (GYS1 antibody) at dilution of 1:200 (under 10x lens).



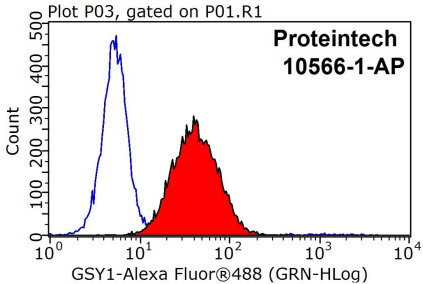
Immunohistochemical analysis of paraffin-embedded human liver tissue slide using 10566-1-AP (GYS1 antibody) at dilution of 1:200 (under 40x lens).



IP result of anti-GYS1 (IP:10566-1-AP, 4ug; Detection:10566-1-AP 1:300) with mouse skeletal muscle tissue lysate 2200ug.



Immunofluorescent analysis of (-20°C Ethanol) fixed HepG2 cells using 10566-1-AP (GYS1 antibody) at dilution of 1:50 and Alexa Fluor 488-conjugated AffiniPure Goat Anti-Rabbit IgG(H+L).



1X10<sup>6</sup> HepG2 cells were stained with 0.2ug GYS1 antibody (10566-1-AP, red) and control antibody (blue). Fixed with 90% MeOH blocked with 3% BSA (30 min). Alexa Fluor 488-conjugated AffiniPure Goat Anti-Rabbit IgG(H+L) with dilution 1:1000.