

For Research Use Only

GTF2A2 Polyclonal antibody

Catalog Number: 10540-1-AP



Basic Information

Catalog Number: 10540-1-AP	GenBank Accession Number: BC001919	Purification Method: Antigen affinity purification
Size: 150ul , Concentration: 400 µg/ml by Nanodrop and 300 µg/ml by Bradford method using BSA as the standard;	GeneID (NCBI): 2958	Recommended Dilutions: WB 1:200-1:1000 IHC 1:20-1:200
Source: Rabbit	Full Name: general transcription factor IIA, 2, 12kDa	
Isotype: IgG	Calculated MW: 12 kDa	
Immunogen Catalog Number: AG0825	Observed MW: 12 kDa	

Applications

Tested Applications: IHC, WB, ELISA	Positive Controls:
Species Specificity: human, mouse, rat	WB : mouse testis tissue, HeLa cells IHC : human prostate cancer tissue,
Note-IHC: suggested antigen retrieval with TE buffer pH 9.0; (*) Alternatively, antigen retrieval may be performed with citrate buffer pH 6.0	

Background Information

Transcription mediated by RNA polymerase II depends on a set of different transcription factors to form the pre-initiation complex. TFIIA is involved in the construction of this complex and increases the affinity of TBP for the DNA union region [PMID:20480367]. TFIIA in a complex with TBP mediates transcriptional activity [PMID:11030333]. GTF2A2 is one subunit of TFIIA.

Storage

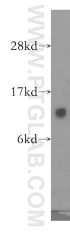
Storage:
Store at -20°C. Stable for one year after shipment.
Storage Buffer:
PBS with 0.02% sodium azide and 50% glycerol pH 7.3.
Aliquoting is unnecessary for -20°C storage

*** 20ul sizes contain 0.1% BSA

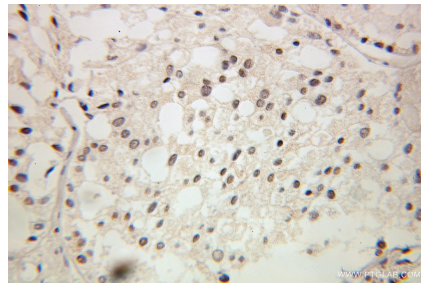
For technical support and original validation data for this product please contact:
T: 1 (888) 4PTGLAB (1-888-478-4522) (toll free in USA), or 1(312) 455-8498 (outside USA)
E: proteintech@ptglab.com
W: ptglab.com

This product is exclusively available under Proteintech Group brand and is not available to purchase from any other manufacturer.

Selected Validation Data



mouse testis tissue were subjected to SDS PAGE followed by western blot with 10540-1-AP (GTF2A2 antibody) at dilution of 1:300 incubated at room temperature for 1.5 hours.



Immunohistochemical analysis of paraffin-embedded human prostate cancer using 10540-1-AP (GTF2A2 antibody) at dilution of 1:100 (under 25x lens).