

For Research Use Only

NELF-A Polyclonal antibody

Catalog Number: 10456-1-AP

Featured Product

5 Publications



Basic Information

| | | |
|---|---|--|
| Catalog Number: 10456-1-AP | GenBank Accession Number: BC002764 | Purification Method: Antigen affinity purification |
| Size: 150ul , Concentration: 700 µg/ml by Nanodrop; | GeneID (NCBI): 7469 | Recommended Dilutions: WB 1:500-1:2000 IP 0.5-4.0 ug for IP and 1:500-1:1000 for WB |
| Source: Rabbit | Full Name: Wolf-Hirschhorn syndrome candidate 2 | IF 1:10-1:100 |
| Isotype: IgG | Calculated MW: 57 kDa | |
| Immunogen Catalog Number: AG0708 | Observed MW: 57 kDa | |

Applications

Tested Applications:

IF, IP, WB, ELISA

Cited Applications:

WB

Species Specificity:

human, mouse

Cited Species:

human, mouse

Positive Controls:

WB : HeLa cells, mouse liver tissue, Jurkat cells, mouse brain tissue

IP : mouse brain tissue,

IF : HeLa cells,

Background Information

WHSC2, also known as NELF-A, is a component of the Negative ELongation Factor complex, which inhibits RNA polymerase II progression early during elongation (a process referred to as 'promoter proximal pausing'), thereby altering expression of its target genes in a positive and negative manner [PMID:19245807]. This complex acts with DRB sensitivity-inducing factor (DSIF), a heterodimer of SPT4 and SPT5, to cause transcriptional pausing of RNA polymerase II [PMID:12612062].

Notable Publications

| Author | Pubmed ID | Journal | Application |
|-------------|-----------|-------------------|-------------|
| Seina Ohe | 36463234 | Nat Commun | WB |
| Yuki Aoi | 34480849 | Mol Cell | |
| Xiaodong Lu | 27353326 | Nucleic Acids Res | WB |

Storage

Storage:

Store at -20°C. Stable for one year after shipment.

Storage Buffer:

PBS with 0.02% sodium azide and 50% glycerol pH 7.3.

Aliquoting is unnecessary for -20°C storage

*** 20ul sizes contain 0.1% BSA

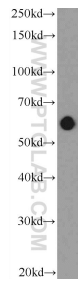
For technical support and original validation data for this product please contact:

T: 1 (888) 4PTGLAB (1-888-478-4522) (toll free in USA), or 1(312) 455-8498 (outside USA)

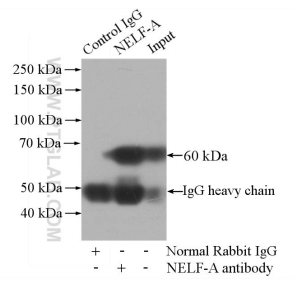
E: proteintech@ptglab.com
W: ptglab.com

This product is exclusively available under Proteintech Group brand and is not available to purchase from any other manufacturer.

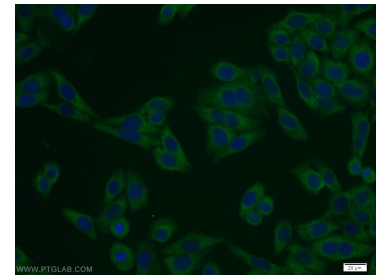
Selected Validation Data



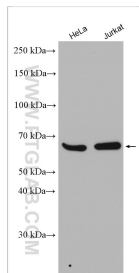
HeLa cells were subjected to SDS PAGE followed by western blot with 10456-1-AP (NELF-A Antibody) at dilution of 1:1000 incubated at room temperature for 1.5 hours.



IP Result of anti-NELF-A (IP:10456-1-AP, 4 μ g; Detection:10456-1-AP 1:500) with mouse brain tissue lysate 3440 μ g.



Immunofluorescent analysis of HeLa cells using 10456-1-AP (NELF-A antibody) at dilution of 1:25 and Alexa Fluor 488-conjugated AffiniPure Goat Anti-Rabbit IgG(H+L).



Various lysates were subjected to SDS PAGE followed by western blot with 10456-1-AP (NELF-A antibody) at dilution of 1:8000 incubated at room temperature for 1.5 hours.