

For Research Use Only

DSE Polyclonal antibody

Catalog Number: 10452-1-AP **1 Publications**



Basic Information

Catalog Number: 10452-1-AP	GenBank Accession Number: BC039245	Purification Method: Antigen affinity purification
Size: 150ul , Concentration: 350 µg/ml by Nanodrop and 267 µg/ml by Bradford method using BSA as the standard;	GeneID (NCBI): 29940	Recommended Dilutions: IHC 1:20-1:200
Source: Rabbit	Full Name: dermatan sulfate epimerase	
Isotype: IgG	Calculated MW: 958 aa, 110 kDa	
Immunogen Catalog Number: AG0695		

Applications

Tested Applications: IHC, ELISA	Positive Controls: IHC : human liver cancer tissue,
Cited Applications: IF, IHC	
Species Specificity: human	
Cited Species: human	
Note-IHC: suggested antigen retrieval with TE buffer pH 9.0; (*) Alternatively, antigen retrieval may be performed with citrate buffer pH 6.0	

Background Information

DSE, also named as SART2 and DSEPI, is an enzyme that converts D-glucuronic acid to L-iduronic acid residues in dermatan sulphate biosynthesis. It is also identified to be a tumour-associated antigen. DSE is recognized by cytotoxic T cells (CTLs) and its enhanced expression in many cancers has been reported. DSE is a potential candidate for a tumour antigen with immunogenicity.

Notable Publications

Author	Pubmed ID	Journal	Application
Mizukoshi Eishiro E	22830596	Liver Int	IHC, IF

Storage

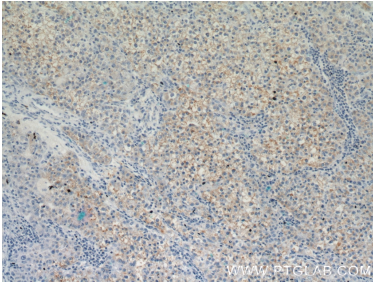
Storage:
Store at -20°C. Stable for one year after shipment.
Storage Buffer:
PBS with 0.02% sodium azide and 50% glycerol pH 7.3.
Aliquoting is unnecessary for -20°C storage

*** 20ul sizes contain 0.1% BSA

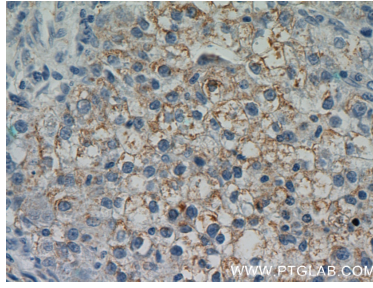
For technical support and original validation data for this product please contact:
T: 1 (888) 4PTGLAB (1-888-478-4522) (toll free in USA), or 1(312) 455-8498 (outside USA)
E: proteintech@ptglab.com
W: ptglab.com

This product is exclusively available under Proteintech Group brand and is not available to purchase from any other manufacturer.

Selected Validation Data



Immunohistochemical analysis of paraffin-embedded human liver cancer using 10452-1-AP (DSE antibody) at dilution of 1:50 (under 10x lens).



Immunohistochemical analysis of paraffin-embedded human liver cancer using 10452-1-AP (DSE antibody) at dilution of 1:50 (under 40x lens).