

For Research Use Only

# WBP11 Polyclonal antibody

Catalog Number: 10316-1-AP



## Basic Information

<b>Catalog Number:</b> 10316-1-AP	<b>GenBank Accession Number:</b> BC001621	<b>Purification Method:</b> Antigen affinity purification
<b>Size:</b> 150ul , Concentration: 800 µg/ml by Nanodrop and 427 µg/ml by Bradford method using BSA as the standard;	<b>GeneID (NCBI):</b> 51729	<b>Recommended Dilutions:</b> WB 1:1000-1:6000 IP 0.5-4.0 ug for IP and 1:500-1:1000 for WB
<b>Source:</b> Rabbit	<b>Full Name:</b> WW domain binding protein 11	<b>IHC 1:50-1:500</b>
<b>Isotype:</b> IgG	<b>Calculated MW:</b> 70 kDa	
<b>Immunogen Catalog Number:</b> AG0366	<b>Observed MW:</b> 66-70 kDa	

## Applications

<b>Tested Applications:</b> IHC, IP, WB, ELISA	<b>Positive Controls:</b> WB : HeLa cells, mouse heart tissue
<b>Species Specificity:</b> human, mouse, rat	<b>IP :</b> mouse heart tissue,
<b>Note-IHC: suggested antigen retrieval with TE buffer pH 9.0; (*) Alternatively, antigen retrieval may be performed with citrate buffer pH 6.0</b>	<b>IHC :</b> human breast cancer tissue,

## Background Information

WBP11 (WW domain-binding protein 11) is a protein that in humans, is encoded by the WBP11 gene. The function of WBP11 is to play a role in the regulation of pre-mRNA processing. More specifically, this nuclear protein, colocalizes with mRNA splicing factors and intermediate filament-containing perinuclear networks. The predicted MW of this protein is 70 kDa, and this antibody specially recognises the 70 kDa protein.

## Storage

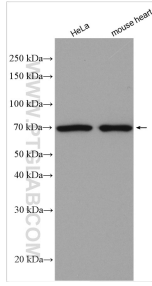
**Storage:**  
Store at -20°C. Stable for one year after shipment.  
**Storage Buffer:**  
PBS with 0.02% sodium azide and 50% glycerol pH 7.3.  
Aliquoting is unnecessary for -20°C storage

\*\*\* 20ul sizes contain 0.1% BSA

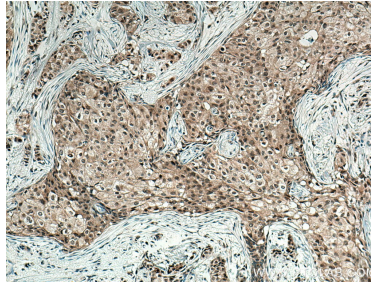
For technical support and original validation data for this product please contact:  
T: 1 (888) 4PTGLAB (1-888-478-4522) (toll free in USA), or 1(312) 455-8498 (outside USA)  
E: proteintech@ptglab.com  
W: ptglab.com

This product is exclusively available under Proteintech Group brand and is not available to purchase from any other manufacturer.

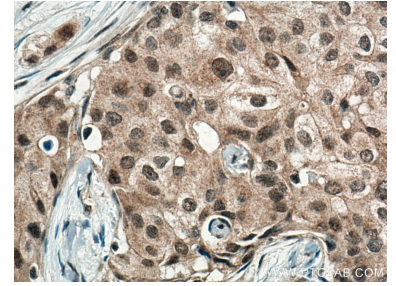
## Selected Validation Data



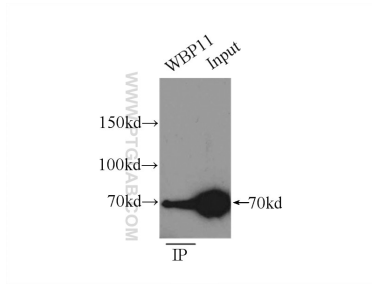
Various lysates were subjected to SDS PAGE followed by western blot with 10316-1-AP (WBP11 antibody) at dilution of 1:3000 incubated at room temperature for 1.5 hours.



Immunohistochemical analysis of paraffin-embedded human breast cancer tissue slide using 10316-1-AP (WBP11 antibody) at dilution of 1:200 (under 10x lens). Heat mediated antigen retrieval with Tris-EDTA buffer (pH 9.0).



Immunohistochemical analysis of paraffin-embedded human breast cancer tissue slide using 10316-1-AP (WBP11 antibody) at dilution of 1:200 (under 40x lens). Heat mediated antigen retrieval with Tris-EDTA buffer (pH 9.0).



IP Result of anti-WBP11 (IP:10316-1-AP, 3ug; Detection:10316-1-AP 1:500) with mouse heart tissue lysate 6000ug.