

For Research Use Only

# MEA1 Polyclonal antibody

Catalog Number: 10267-1-AP



## Basic Information

<b>Catalog Number:</b> 10267-1-AP	<b>GenBank Accession Number:</b> BC001754	<b>Purification Method:</b> Antigen affinity purification
<b>Size:</b> 150ul , Concentration: 260 µg/ml by Nanodrop and 140 µg/ml by Bradford method using BSA as the standard;	<b>GeneID (NCBI):</b> 4201	<b>Recommended Dilutions:</b> WB 1:500-1:1000 IHC 1:20-1:200
<b>Source:</b> Rabbit	<b>Full Name:</b> male-enhanced antigen 1	
<b>Isotype:</b> IgG	<b>Calculated MW:</b> 20 kDa	
<b>Immunogen Catalog Number:</b> AG0375	<b>Observed MW:</b> 34 kDa and 36 kDa	

## Applications

<b>Tested Applications:</b> IHC, WB, ELISA	<b>Positive Controls:</b> WB : Jurkat cells, mouse testis tissue
<b>Species Specificity:</b> human, mouse	<b>IHC :</b> human pancreas cancer tissue,
<b>Note-IHC: suggested antigen retrieval with TE buffer pH 9.0; (*) Alternatively, antigen retrieval may be performed with citrate buffer pH 6.0</b>	

## Background Information

MEA1, also named Male-enhanced antigen 1, is a 185 amino acid protein, which is highly expressed in testis. MEA1 may play an important role in spermatogenesis and/or testis development. Endogenous protein was detected as two bands (34 and 36 kDa). (PMID: 12444059)

## Storage

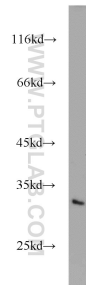
**Storage:**  
Store at -20°C. Stable for one year after shipment.  
**Storage Buffer:**  
PBS with 0.02% sodium azide and 50% glycerol pH 7.3.  
Aliquoting is unnecessary for -20°C storage

\*\*\* 20ul sizes contain 0.1% BSA

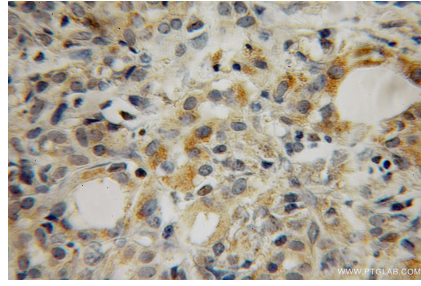
For technical support and original validation data for this product please contact:  
T: 1 (888) 4PTGLAB (1-888-478-4522) (toll free in USA), or 1(312) 455-8498 (outside USA)  
E: proteintech@ptglab.com  
W: ptglab.com

This product is exclusively available under Proteintech Group brand and is not available to purchase from any other manufacturer.

## Selected Validation Data



Jurkat cells were subjected to SDS PAGE followed by western blot with 10267-1-AP (ME1 antibody) at dilution of 1:500 incubated at room temperature for 1.5 hours.



Immunohistochemical analysis of paraffin-embedded human pancreas cancer using 10267-1-AP (ME1 antibody) at dilution of 1:50 (under 40x lens).