

For Research Use Only

# COPS6 Polyclonal antibody

Catalog Number: 10256-1-AP **1 Publications**



## Basic Information

<b>Catalog Number:</b> 10256-1-AP	<b>GenBank Accession Number:</b> BC002520	<b>Purification Method:</b> Antigen affinity purification
<b>Size:</b> 150ul , Concentration: 600 µg/ml by Nanodrop;	<b>GeneID (NCBI):</b> 10980	<b>Recommended Dilutions:</b> WB 1:500-1:3000 IHC 1:50-1:500
<b>Source:</b> Rabbit	<b>Full Name:</b> COP9 constitutive photomorphogenic homolog subunit 6 (Arabidopsis)	
<b>Isotype:</b> IgG	<b>Calculated MW:</b> 327 aa, 36 kDa	
<b>Immunogen Catalog Number:</b> AG0331	<b>Observed MW:</b> 34 kDa	

## Applications

<b>Tested Applications:</b> IHC, WB, ELISA	<b>Positive Controls:</b>
<b>Cited Applications:</b> WB	<b>WB :</b> mouse colon tissue, 3T3-L1 cells, pig lymph node tissue
<b>Species Specificity:</b> human, mouse, rat, monkey, pig	<b>IHC :</b> human colon cancer tissue,
<b>Cited Species:</b> human	
<b>Note-IHC: suggested antigen retrieval with TE buffer pH 9.0; (*) Alternatively, antigen retrieval may be performed with citrate buffer pH 6.0</b>	

## Background Information

The COPS6 protein, also named as mov34, is a 34kd subunit of COP9 signalosome, a highly conserved eight-subunit protein complex that functions as an important regulator in multiple signaling pathways. This protein belongs to translation initiation factor 3 (eIF3) superfamily. It is involved in the regulation of cell cycle and acts as the regulatory subunit of the 26S proteasome.

## Notable Publications

Author	Pubmed ID	Journal	Application
Zun Mao	31223289	Int J Biol Sci	WB

## Storage

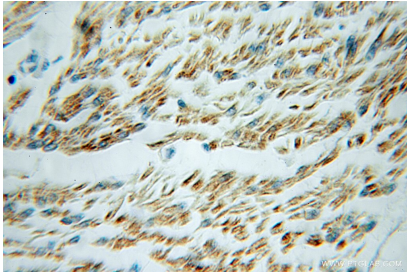
**Storage:**  
Store at -20°C. Stable for one year after shipment.  
**Storage Buffer:**  
PBS with 0.02% sodium azide and 50% glycerol pH 7.3.  
Aliquoting is unnecessary for -20°C storage

\*\*\* 20ul sizes contain 0.1% BSA

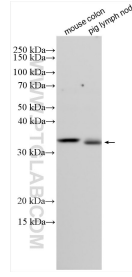
For technical support and original validation data for this product please contact:  
T: 1 (888) 4PTGLAB (1-888-478-4522) (toll free in USA), or 1(312) 455-8498 (outside USA)  
E: proteintech@ptglab.com  
W: ptglab.com

This product is exclusively available under Proteintech Group brand and is not available to purchase from any other manufacturer.

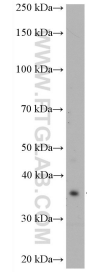
## Selected Validation Data



Immunohistochemical analysis of paraffin-embedded human colon cancer using 10256-1-AP (COPS6 antibody) at dilution of 1:50 (under 10x lens).



Various lysates were subjected to SDS PAGE followed by western blot with 10256-1-AP (COPS6 antibody) at dilution of 1:1500 incubated at room temperature for 1.5 hours.



3T3-L1 cells were subjected to SDS PAGE followed by western blot with 10256-1-AP (COPS6 antibody) at dilution of 1:600 incubated at room temperature for 1.5 hours.