

For Research Use Only

# PLAA Monoclonal antibody

Catalog Number: 60244-1-Ig **Featured Product**



## Basic Information

<b>Catalog Number:</b> 60244-1-Ig	<b>GenBank Accession Number:</b> BC032551	<b>Purification Method:</b> Protein A purification
<b>Size:</b> 150ul , Concentration: 1360 µg/ml by Bradford method using BSA as the standard;	<b>GeneID (NCBI):</b> 9373	<b>CloneNo.:</b> 5C10G9
<b>Source:</b> Mouse	<b>Full Name:</b> phospholipase A2-activating protein	<b>Recommended Dilutions:</b> WB 1:500-1:2000 IHC 1:50-1:500
<b>Isotype:</b> IgG1	<b>Calculated MW:</b> 738 aa, 81 kDa	
<b>Immunogen Catalog Number:</b> AG3224	<b>Observed MW:</b> 75-80 kDa	

## Applications

<b>Tested Applications:</b> IHC, WB, ELISA	<b>Positive Controls:</b>
<b>Species Specificity:</b> human, mouse, rat	<b>WB :</b> ROS1728 cells, K-562 cells, MCF-7 cells, A431 cells
<b>Note-IHC: suggested antigen retrieval with TE buffer pH 9.0; (*) Alternatively, antigen retrieval may be performed with citrate buffer pH 6.0</b>	<b>IHC :</b> human kidney tissue,

## Background Information

Phospholipase A-2-activating protein (PLAA), also named PLAP, can interact with ubiquitin and is involved in the maintenance of ubiquitin levels. PLAA contains multiple consensus domains including WD repeats, PFU domain and PUL domain. Although the function of PLAA remains unclear, ubiquitin binding of PLAA might be the central role that connects ubiquitination and degradation in ERAD. Recent finding revealed that PLAA served as a novel nociceptive mediator after incision, and its expression level is regulated by miR-203.

## Storage

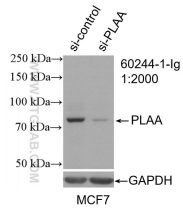
**Storage:**  
Store at -20°C. Stable for one year after shipment.  
**Storage Buffer:**  
PBS with 0.02% sodium azide and 50% glycerol pH 7.3.  
**Aliquoting is unnecessary for -20°C storage**

**\*\*\* 20ul sizes contain 0.1% BSA**

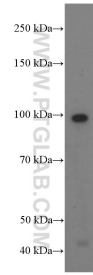
For technical support and original validation data for this product please contact:  
T: 1 (888) 4PTGLAB (1-888-478-4522) (toll free in USA), or 1(312) 455-8498 (outside USA)  
E: proteintech@ptglab.com  
W: ptglab.com

**This product is exclusively available under Proteintech Group brand and is not available to purchase from any other manufacturer.**

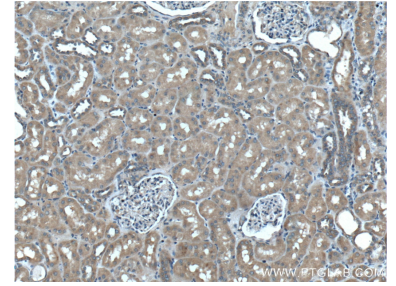
## Selected Validation Data



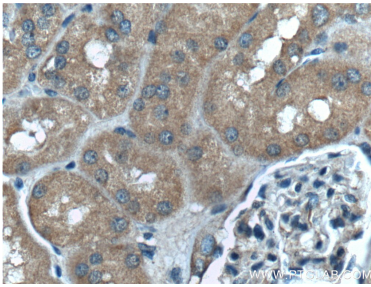
WB result of PLAA antibody (60244-1-Ig; 1:2000; incubated at room temperature for 1.5 hours) with sh-Control and sh-PLAA transfected MCF-7 cells.



ROS1728 cells were subjected to SDS PAGE followed by western blot with 60244-1-Ig (PLAA Antibody) at dilution of 1:1000 incubated at room temperature for 1.5 hours.



Immunohistochemical analysis of paraffin-embedded human kidney tissue slide using 60244-1-Ig (PLAA Antibody) at dilution of 1:200 (under 10x lens).



Immunohistochemical analysis of paraffin-embedded human kidney tissue slide using 60244-1-Ig (PLAA Antibody) at dilution of 1:200 (under 40x lens).