

For Research Use Only

# RGSL1 Polyclonal antibody

Catalog Number: 25836-1-AP



## Basic Information

<b>Catalog Number:</b> 25836-1-AP	<b>GenBank Accession Number:</b> BC142944	<b>Purification Method:</b> Antigen affinity purification
<b>Size:</b> 150ul , Concentration: 350 µg/ml by Nanodrop and 220 µg/ml by Bradford method using BSA as the standard;	<b>GeneID (NCBI):</b> 353299	<b>Recommended Dilutions:</b> WB 1:500-1:1000 IHC 1:50-1:500
<b>Source:</b> Rabbit	<b>Full Name:</b> regulator of G-protein signaling like 1	
<b>Isotype:</b> IgG	<b>Calculated MW:</b> 1076 aa, 126 kDa	
<b>Immunogen Catalog Number:</b> AG20269	<b>Observed MW:</b> 125 kDa	

## Applications

### Tested Applications:

IHC, WB, ELISA

### Species Specificity:

human, mouse

**Note-IHC: suggested antigen retrieval with TE buffer pH 9.0; (\*) Alternatively, antigen retrieval may be performed with citrate buffer pH 6.0**

### Positive Controls:

WB : mouse brain tissue,

IHC : human testis tissue,

## Background Information

RGSL1, also named as RGSL and RGSL2, belongs to the RSG family. RGSL1 is involved in the G-protein signaling regulation with a suggested role in prostate carcinogenesis (PMID: 28662289). RGSL1 has 6 isoforms with the molecular mass of 47-63, 71 and 126 kDa. RGSL1 may interact with other markers in the development of breast cancer (PMID: 21135262).

## Storage

### Storage:

Store at -20°C. Stable for one year after shipment.

### Storage Buffer:

PBS with 0.02% sodium azide and 50% glycerol pH 7.3.

Aliquoting is unnecessary for -20°C storage

\*\*\* 20ul sizes contain 0.1% BSA

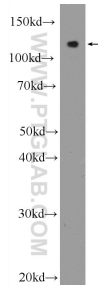
For technical support and original validation data for this product please contact:

T: 1 (888) 4PTGLAB (1-888-478-4522) (toll free in USA), or 1(312) 455-8498 (outside USA)

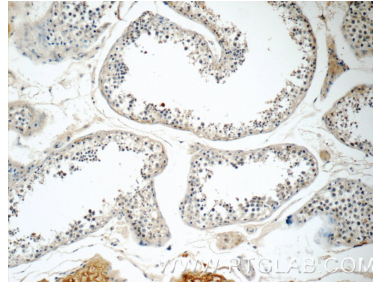
E: proteintech@ptglab.com  
W: ptglab.com

This product is exclusively available under Proteintech Group brand and is not available to purchase from any other manufacturer.

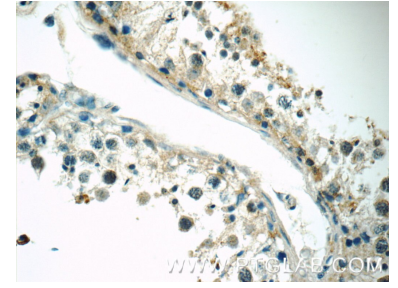
## Selected Validation Data



mouse brain tissue were subjected to SDS PAGE followed by western blot with 25836-1-AP (RGSL1 Antibody) at dilution of 1:600 incubated at room temperature for 1.5 hours.



Immunohistochemical analysis of paraffin-embedded human testis tissue slide using 25836-1-AP (RGSL1 Antibody) at dilution of 1:100 (under 10x lens).



Immunohistochemical analysis of paraffin-embedded human testis tissue slide using 25836-1-AP (RGSL1 Antibody) at dilution of 1:100 (under 40x lens).