

For Research Use Only

RTEL1 Polyclonal antibody

Catalog Number: 25337-1-AP **2 Publications**



Basic Information

Catalog Number:

25337-1-AP

Size:

150ul, Concentration: 450 µg/ml by Nanodrop and 353 µg/ml by Bradford method using BSA as the standard;

Source:

Rabbit

Isotype:

IgG

GenBank Accession Number:

NM_016434

GeneID (NCBI):

51750

UNIPROT ID:

Q9NZ71

Full Name:

regulator of telomere elongation helicase 1

Calculated MW:

142 kDa

Observed MW:

133 kDa

Purification Method:

Antigen affinity purification

Recommended Dilutions:

WB 1:500-1:1000

IP 0.5-4.0 ug for 1.0-3.0 mg of total protein lysate

IF/ICC 1:300-1:1200

Applications

Tested Applications:

WB, IP, IF, ELISA

Cited Applications:

WB

Species Specificity:

human, mouse, rat

Cited Species:

human, zebrafish

Positive Controls:

WB : BGC-823 cells, C6 cells, HeLa cells, HepG2 cells, mouse brain tissue, mouse testis tissue, PC-3 cells

IP : mouse brain tissue,

IF/ICC : HepG2 cells,

Notable Publications

Author	Pubmed ID	Journal	Application
Jingzhen Li	33476374	Nucleic Acids Res	WB
Yahui Wang	38697125	Cell Genom	WB

Storage

Storage:

Store at -20°C. Stable for one year after shipment.

Storage Buffer:

PBS with 0.02% sodium azide and 50% glycerol pH 7.3.

Aliquoting is unnecessary for -20°C storage

***** 20ul sizes contain 0.1% BSA**

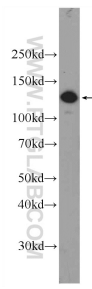
For technical support and original validation data for this product please contact:

T: 1 (888) 4PTGLAB (1-888-478-4522) (toll free in USA), or 1(312) 455-8498 (outside USA)

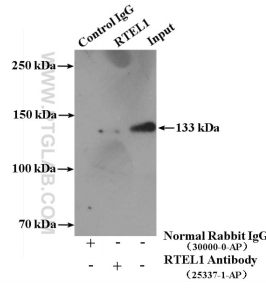
E: proteintech@ptglab.com
W: ptglab.com

This product is exclusively available under Proteintech Group brand and is not available to purchase from any other manufacturer.

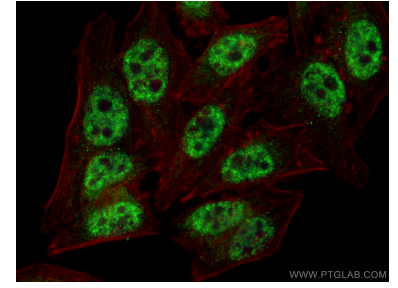
Selected Validation Data



BGC-823 cells were subjected to SDS PAGE followed by western blot with 25337-1-AP (RTEL1 Antibody) at dilution of 1:600 incubated at room temperature for 1.5 hours.



IP result of anti-RTEL1 (IP:25337-1-AP, 4ug; Detection:25337-1-AP 1:500) with mouse brain tissue lysate 4000ug.



Immunofluorescent analysis of (4% PFA) fixed HepG2 cells using RTEL1 antibody (25337-1-AP) at dilution of 1:600 and CoraLite@488-Conjugated AffiniPure Goat Anti-Rabbit IgG(H+L) (SA00013-2), CL594-Phalloidin (red).