

For Research Use Only

RNF135 Polyclonal antibody

Catalog Number: 25061-1-AP **1 Publications**



Basic Information

Catalog Number: 25061-1-AP	GenBank Accession Number: BC005084	Purification Method: Antigen affinity purification
Size: 150ul , Concentration: 1000 µg/ml by Nanodrop and 453 µg/ml by Bradford method using BSA as the standard;	GeneID (NCBI): 84282	Recommended Dilutions: WB 1:500-1:1000 IHC 1:100-1:400 IF 1:200-1:800
Source: Rabbit	Full Name: ring finger protein 135	
Isotype: IgG	Calculated MW: 432 aa, 48 kDa	
Immunogen Catalog Number: AG18821	Observed MW: 48 kDa	

Applications

Tested Applications: IF, IHC, WB, ELISA	Positive Controls: WB : mouse kidney tissue, U-87 MG cells IHC : human kidney tissue, human stomach tissue IF : PC-12 cells,
Cited Applications: WB	
Species Specificity: human, mouse	
Cited Species: human	
Note-IHC: suggested antigen retrieval with TE buffer pH 9.0; (*) Alternatively, antigen retrieval may be performed with citrate buffer pH 6.0	

Background Information

Ring finger protein 135 (RNF135), located on chromosome 17q11.2, is a RING finger domain-containing E3 ubiquitin ligase that was identified as a bio-marker and therapy target of glioblastoma (PMID: 26856755). RNF135 facilitates RIG-I C-terminal ubiquitination to up-regulate RIG-I-mediated IFN signaling and suppress viral replication. This antibody can detect a band at 48 kDa as predicted.

Notable Publications

Author	Pubmed ID	Journal	Application
Yuan-Qin Min	32471869	J Biol Chem	WB

Storage

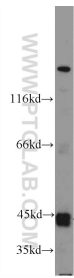
Storage:
Store at -20°C. Stable for one year after shipment.
Storage Buffer:
PBS with 0.02% sodium azide and 50% glycerol pH 7.3.
Aliquoting is unnecessary for -20°C storage

*** 20ul sizes contain 0.1% BSA

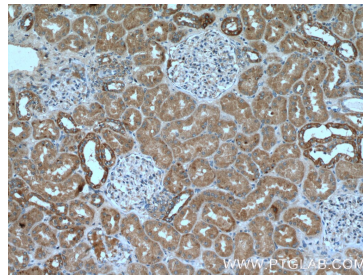
For technical support and original validation data for this product please contact:
T: 1 (888) 4PTGLAB (1-888-478-4522) (toll free in USA), or 1(312) 455-8498 (outside USA)
E: proteintech@ptglab.com
W: ptglab.com

This product is exclusively available under Proteintech Group brand and is not available to purchase from any other manufacturer.

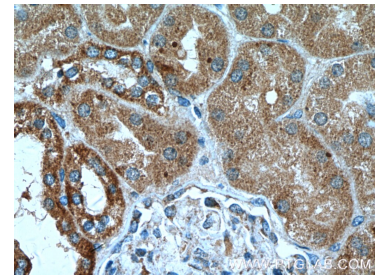
Selected Validation Data



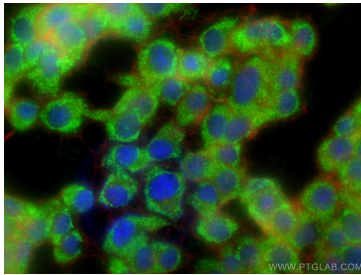
mouse kidney tissue were subjected to SDS PAGE followed by western blot with 25061-1-AP (RNF135 Antibody) at dilution of 1:600 incubated at room temperature for 1.5 hours.



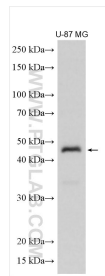
Immunohistochemical analysis of paraffin-embedded human kidney tissue slide using 25061-1-AP (RNF135 Antibody) at dilution of 1:200 (under 10x lens).



Immunohistochemical analysis of paraffin-embedded human kidney tissue slide using 25061-1-AP (RNF135 Antibody) at dilution of 1:200 (under 40x lens).



Immunofluorescent analysis of (-20°C Ethanol) fixed PC-12 cells using RNF135 antibody (25061-1-AP) at dilution of 1:400 and CoraLite®488-Conjugated AffiniPure Goat Anti-Rabbit IgG(H+L), CL594-Phalloidin (red).



Various lysates were subjected to SDS PAGE followed by western blot with 25061-1-AP (RNF135 antibody) at dilution of 1:800 incubated at room temperature for 1.5 hours.