

For Research Use Only

# SRBD1 Polyclonal antibody

Catalog Number: 24931-1-AP



## Basic Information

<b>Catalog Number:</b> 24931-1-AP	<b>GenBank Accession Number:</b> BC032538	<b>Purification Method:</b> Antigen affinity purification
<b>Size:</b> 150ul , Concentration: 1000 ug/ml by Nanodrop;	<b>GeneID (NCBI):</b> 55133	<b>Recommended Dilutions:</b> WB 1:1000-1:8000 IP 0.5-4.0 ug for 1.0-3.0 mg of total protein lysate IHC 1:50-1:500
<b>Source:</b> Rabbit	<b>UNIPROT ID:</b> Q8N5C6	
<b>Isotype:</b> IgG	<b>Full Name:</b> S1 RNA binding domain 1	
<b>Immunogen Catalog Number:</b> AG21661	<b>Calculated MW:</b> 995 aa, 112 kDa	
	<b>Observed MW:</b> 100-120 kDa	

## Applications

### Tested Applications:

WB, IP, IHC, ELISA

### Species Specificity:

human, mouse

**Note-IHC: suggested antigen retrieval with TE buffer pH 9.0; (\*) Alternatively, antigen retrieval may be performed with citrate buffer pH 6.0**

### Positive Controls:

WB : SH-SY5Y cells,

IP : mouse brain tissue,

IHC : human brain tissue,

## Background Information

S1 RNA-binding domain-containing protein 1 (SRBD1) is a 995 amino acid protein, which contains one S1 motif domain. SRBD1 is a susceptibility gene for normal tension glaucoma (NTG) and may be involved in cell growth inhibition and apoptosis. Two isoforms of SRBD1 exist due to alternative splicing events, and the gene which encodes SRBD1 maps to human chromosome 2p21.

## Storage

### Storage:

Store at -20°C. Stable for one year after shipment.

### Storage Buffer:

PBS with 0.02% sodium azide and 50% glycerol pH 7.3.

Aliquoting is unnecessary for -20°C storage

\*\*\* 20ul sizes contain 0.1% BSA

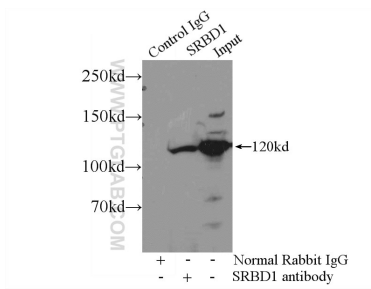
For technical support and original validation data for this product please contact:

T: 1 (888) 4PTGLAB (1-888-478-4522) (toll free in USA), or 1(312) 455-8498 (outside USA)

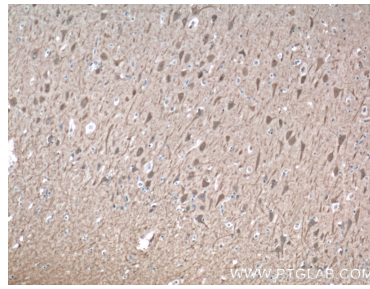
E: [proteintech@ptglab.com](mailto:proteintech@ptglab.com)  
W: [ptglab.com](http://ptglab.com)

This product is exclusively available under Proteintech Group brand and is not available to purchase from any other manufacturer.

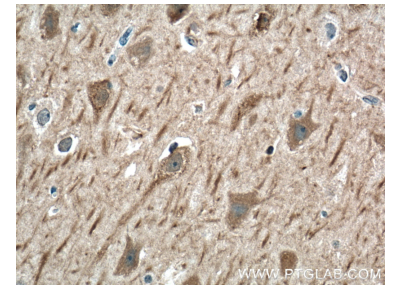
## Selected Validation Data



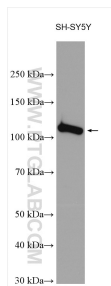
IP result of anti-SRBD1 (IP:24931-1-AP, 4ug; Detection:24931-1-AP 1:300) with mouse brain tissue lysate 4000ug.



Immunohistochemical analysis of paraffin-embedded human brain tissue slide using 24931-1-AP (SRBD1 Antibody) at dilution of 1:200 (under 10x lens). Heat mediated antigen retrieval with Tris-EDTA buffer (pH 9.0).



Immunohistochemical analysis of paraffin-embedded human brain tissue slide using 24931-1-AP (SRBD1 Antibody) at dilution of 1:200 (under 40x lens). Heat mediated antigen retrieval with Tris-EDTA buffer (pH 9.0).



SH-SY5Y cells were subjected to SDS PAGE followed by western blot with 24931-1-AP (SRBD1 antibody) at dilution of 1:4000 incubated at room temperature for 1.5 hours.