

For Research Use Only

CCBE1 Polyclonal antibody

Catalog Number: 24449-1-AP



Basic Information

Catalog Number: 24449-1-AP	GenBank Accession Number: BC046645	Purification Method: Antigen affinity purification
Size: 150ul , Concentration: 750 µg/ml by Nanodrop and 447 µg/ml by Bradford method using BSA as the standard;	GeneID (NCBI): 147372	Recommended Dilutions: IHC 1:50-1:500
Source: Rabbit	Full Name: collagen and calcium binding EGF domains 1	
Isotype: IgG	Calculated MW: 406 aa, 44 kDa	
Immunogen Catalog Number: AG19686		

Applications

Tested Applications: IHC, ELISA	Positive Controls: IHC : human kidney tissue,
Species Specificity: human	
Note-IHC: suggested antigen retrieval with TE buffer pH 9.0; (*) Alternatively, antigen retrieval may be performed with citrate buffer pH 6.0	

Background Information

CCBE1 (collagen and calcium-binding EGF domain-containing protein 1) is a secreted protein that is indispensable for lymphangiogenesis during development. CCBE1 may be a guidance molecule that regulates lymphangioblast budding and possibly migration (PMID: 19287381). The gene of CCBE1 maps to 18q21.32 and encodes a protein of 44 kDa that contains an EGF-like domain and two collagen-like domains. Mutations in the CCBE1 gene cause Hennekam lymphangiectasia-lymphedema syndrome (PMID: 19935664).

Storage

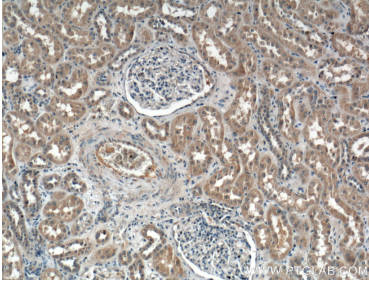
Storage:
Store at -20°C. Stable for one year after shipment.
Storage Buffer:
PBS with 0.02% sodium azide and 50% glycerol pH 7.3.
Aliquoting is unnecessary for -20°C storage

***** 20ul sizes contain 0.1% BSA**

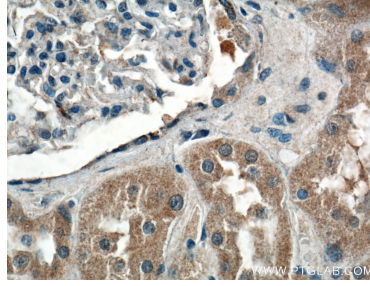
For technical support and original validation data for this product please contact:
T: 1 (888) 4PTGLAB (1-888-478-4522) (toll free in USA), or 1(312) 455-8498 (outside USA) E: proteintech@ptglab.com W: ptglab.com

This product is exclusively available under Proteintech Group brand and is not available to purchase from any other manufacturer.

Selected Validation Data



Immunohistochemical analysis of paraffin-embedded human kidney tissue slide using 24449-1-AP (CCBE1 Antibody) at dilution of 1:200 (under 10x lens).



Immunohistochemical analysis of paraffin-embedded human kidney tissue slide using 24449-1-AP (CCBE1 Antibody) at dilution of 1:200 (under 40x lens).