

For Research Use Only

PHKA1 Polyclonal antibody

Catalog Number: 24279-1-AP **2 Publications**



Basic Information

Catalog Number: 24279-1-AP	GenBank Accession Number: BC104944	Purification Method: Antigen affinity purification
Size: 150ul , Concentration: 450 µg/ml by Nanodrop and 300 µg/ml by Bradford method using BSA as the standard;	GeneID (NCBI): 5255	Recommended Dilutions: WB 1:500-1:1000 IHC 1:50-1:500 IF/ICC 1:10-1:100
Source: Rabbit	UNIPROT ID: P46020	
Isotype: IgG	Full Name: phosphorylase kinase, alpha 1 (muscle)	
Immunogen Catalog Number: AG17998	Calculated MW: 1223 aa, 137 kDa	
	Observed MW: 130 / 140 kDa	

Applications

Tested Applications: WB, IF, IHC, ELISA	Positive Controls: WB : mouse skeletal muscle tissue, mouse heart tissue IHC : human skeletal muscle tissue, IF/ICC : HeLa cells,
Cited Applications: WB, IHC	
Species Specificity: human, mouse, rat	
Cited Species: human, mouse	
Note-IHC: suggested antigen retrieval with TE buffer pH 9.0; (*) Alternatively, antigen retrieval may be performed with citrate buffer pH 6.0	

Notable Publications

Author	Pubmed ID	Journal	Application
Zhenkang Chen	36598990	Sci Adv	WB
Jing He	35468826	J Transl Med	IHC

Storage

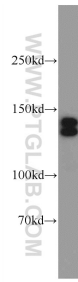
Storage:
Store at -20°C. Stable for one year after shipment.
Storage Buffer:
PBS with 0.02% sodium azide and 50% glycerol pH 7.3.
Aliquoting is unnecessary for -20°C storage

*** 20ul sizes contain 0.1% BSA

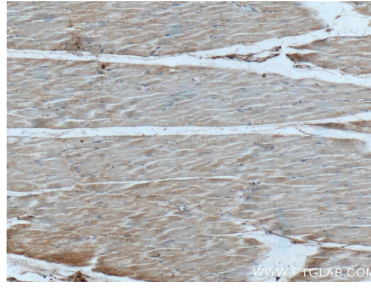
For technical support and original validation data for this product please contact:
T: 1 (888) 4PTGLAB (1-888-478-4522) (toll free in USA), or 1(312) 455-8498 (outside USA)
E: proteintech@ptglab.com
W: ptglab.com

This product is exclusively available under Proteintech Group brand and is not available to purchase from any other manufacturer.

Selected Validation Data



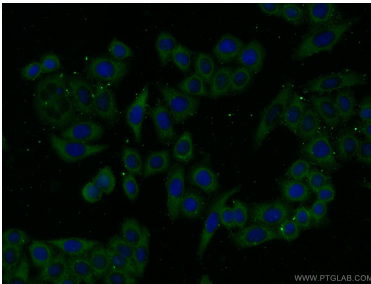
mouse skeletal muscle tissue were subjected to SDS PAGE followed by western blot with 24279-1-AP (PHKA1 Antibody) at dilution of 1:600 incubated at room temperature for 1.5 hours.



Immunohistochemical analysis of paraffin-embedded human skeletal muscle tissue slide using 24279-1-AP (PHKA1 Antibody) at dilution of 1:200 (under 10x lens).



Immunohistochemical analysis of paraffin-embedded human skeletal muscle tissue slide using 24279-1-AP (PHKA1 Antibody) at dilution of 1:200 (under 40x lens).



Immunofluorescent analysis of HeLa cells using 24279-1-AP (PHKA1 antibody) at dilution of 1:25 and Alexa Fluor 488-conjugated AffiniPure Goat Anti-Rabbit IgG(H+L).