

For Research Use Only

Angiotensinogen Polyclonal antibody



Catalog Number: 23972-1-AP

1 Publications

Basic Information

Catalog Number: 23972-1-AP	GenBank Accession Number: BC011519	Purification Method: Antigen Affinity purified
Size: 150ul , Concentration: 300 µg/ml by Nanodrop and 273 µg/ml by Bradford method using BSA as the standard;	GeneID (NCBI): 183	Recommended Dilutions: WB 1:500-1:2000 IHC 1:50-1:500 IF/ICC 1:200-1:800
Source: Rabbit	UNIPROT ID: P01019	
Isotype: IgG	Full Name: angiotensinogen (serpin peptidase inhibitor, clade A, member 8)	
Immunogen Catalog Number: AG21121	Calculated MW: 485 aa, 53 kDa	
	Observed MW: 52 kDa	

Applications

Tested Applications: WB, IHC, IF/ICC, FC (Intra), ELISA	Positive Controls: WB : human plasma, IHC : human liver tissue, human hepatocirrhosis tissue, human kidney tissue IF/ICC : HEK-293 cells, HepG2 cells, L02 cells
Cited Applications: IF	
Species Specificity: human	
Cited Species: mouse	

Note-IHC: suggested antigen retrieval with TE buffer pH 9.0; (*) Alternatively, antigen retrieval may be performed with citrate buffer pH 6.0

Background Information

Angiotensinogen is a precursor of angiotensin II (Ang II), is expressed and synthesized largely in the liver and is cleaved by the enzyme renin in response to lowered blood pressure. It has a key role in mediating vascular constriction and regulating salt and fluid homeostasis. The resulting product, angiotensin I, is then cleaved by angiotensin converting enzyme (ACE) to generate the physiologically active enzyme angiotensin II. Mutations in this gene are associated with susceptibility to essential hypertension, and can cause renal tubular dysgenesis, a severe disorder of renal tubular development. Defects in this gene have also been associated with non-familial structural atrial fibrillation, and inflammatory bowel disease.

Notable Publications

Author	Pubmed ID	Journal	Application
Wen Ding	29563333	JCI Insight	IF

Storage

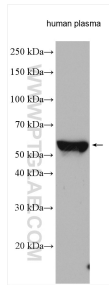
Storage:
Store at -20°C. Stable for one year after shipment.
Storage Buffer:
PBS with 0.02% sodium azide and 50% glycerol pH 7.3.
Aliquoting is unnecessary for -20°C storage

*** 20ul sizes contain 0.1% BSA

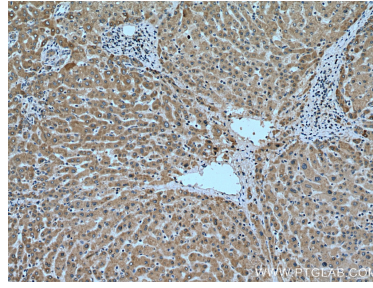
For technical support and original validation data for this product please contact:
T: 1 (888) 4PTGLAB (1-888-478-4522) (toll free in USA), or 1(312) 455-8498 (outside USA)
E: proteintech@ptglab.com
W: ptglab.com

This product is exclusively available under Proteintech Group brand and is not available to purchase from any other manufacturer.

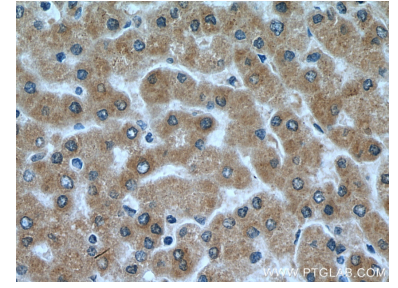
Selected Validation Data



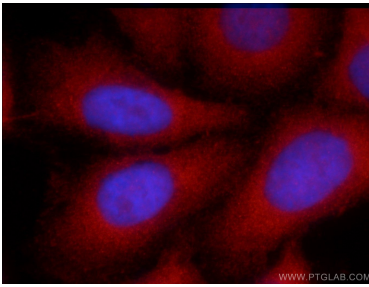
Human plasma were subjected to SDS PAGE followed by western blot with 23972-1-AP (Angiotensinogen antibody) at dilution of 1:1000 incubated at room temperature for 1.5 hours.



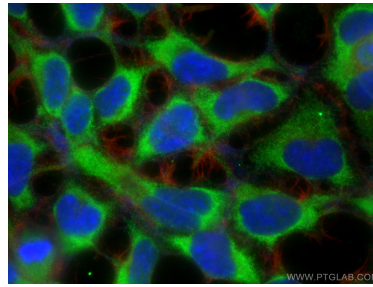
Immunohistochemical analysis of paraffin-embedded human liver tissue slide using 23972-1-AP (Angiotensinogen antibody) at dilution of 1:200 (under 10x Lens). Heat mediated antigen retrieval with Tris-EDTA buffer (pH 9.0).



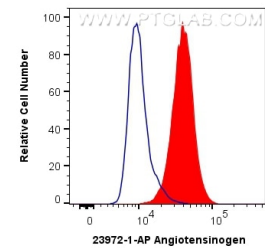
Immunohistochemical analysis of paraffin-embedded human liver tissue slide using 23972-1-AP (Angiotensinogen antibody) at dilution of 1:200 (under 40x Lens). Heat mediated antigen retrieval with Tris-EDTA buffer (pH 9.0).



Immunofluorescent analysis of HepG2 cells using 23972-1-AP (Angiotensinogen antibody) at dilution of 1:25 and Rhodamine-Goat anti-Rabbit IgG.



Immunofluorescent analysis of (-20°C Ethanol) fixed HEK-293 cells using Angiotensinogen antibody (23972-1-AP) at dilution of 1:400 and CoraLite® 488-Conjugated AffiniPure Goat Anti-Rabbit IgG(H+L), CL594-Phalloidin (red).



1X10⁶ HeLa cells were intracellularly stained with 0.4 ug Anti-Human Angiotensinogen (23972-1-AP) and CoraLite® 488-Conjugated AffiniPure Goat Anti-Rabbit IgG(H+L) at dilution 1:1000 (red), or 0.4 ug Control Antibody. Cells were fixed with 4% PFA and permeabilized with Flow Cytometry Perm Buffer (PF00011-C).