

For Research Use Only

# KDELC2 Polyclonal antibody

Catalog Number: 23345-1-AP



## Basic Information

<b>Catalog Number:</b> 23345-1-AP	<b>GenBank Accession Number:</b> BC036526	<b>Purification Method:</b> Antigen affinity purification
<b>Size:</b> 150ul , Concentration: 800 µg/ml by Nanodrop and 453 µg/ml by Bradford method using BSA as the standard;	<b>GeneID (NCBI):</b> 143888	<b>Recommended Dilutions:</b> WB 1:500-1:1000 IHC 1:50-1:500 IF/ICC 1:20-1:200
<b>Source:</b> Rabbit	<b>UNIPROT ID:</b> Q7Z4H8	
<b>Isotype:</b> IgG	<b>Full Name:</b> KDEL (Lys-Asp-Glu-Leu) containing 2	
<b>Immunogen Catalog Number:</b> AG19929	<b>Calculated MW:</b> 507 aa, 59 kDa	
	<b>Observed MW:</b> 62 kDa	

## Applications

### Tested Applications:

WB, IF, IHC, ELISA

### Species Specificity:

human

**Note-IHC: suggested antigen retrieval with TE buffer pH 9.0; (\*) Alternatively, antigen retrieval may be performed with citrate buffer pH 6.0**

### Positive Controls:

**WB** : HeLa cells, human placenta tissue, SMMC-7721 cells

**IHC** : human breast cancer tissue, human placenta tissue

**IF/ICC** : HepG2 cells,

## Storage

### Storage:

Store at -20°C. Stable for one year after shipment.

### Storage Buffer:

PBS with 0.02% sodium azide and 50% glycerol pH 7.3.

Aliquoting is unnecessary for -20°C storage

**\*\*\* 20ul sizes contain 0.1% BSA**

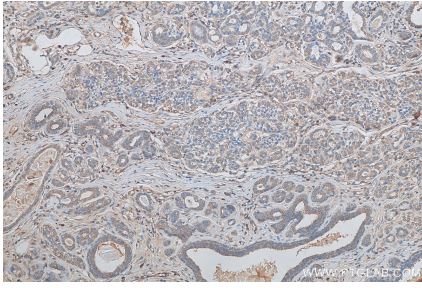
For technical support and original validation data for this product please contact:

T: 1 (888) 4PTGLAB (1-888-478-4522) (toll free in USA), or 1(312) 455-8498 (outside USA)

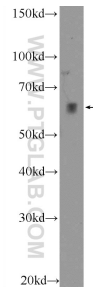
E: [proteintech@ptglab.com](mailto:proteintech@ptglab.com)  
W: [ptglab.com](http://ptglab.com)

**This product is exclusively available under Proteintech Group brand and is not available to purchase from any other manufacturer.**

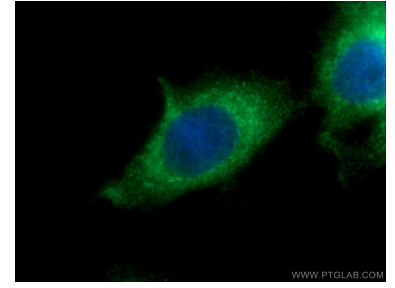
## Selected Validation Data



Immunohistochemical analysis of paraffin-embedded human breast cancer tissue slide using 23345-1-AP (KDEL2 antibody) at dilution of 1:200 (under 40x lens). Heat mediated antigen retrieval with Tris-EDTA buffer (pH 9.0).



HeLa cells were subjected to SDS PAGE followed by western blot with 23345-1-AP (KDEL2 Antibody) at dilution of 1:600 incubated at room temperature for 1.5 hours.



Immunofluorescent analysis of HepG2 cells using 23345-1-AP (KDEL2 antibody) at dilution of 1:50 and Alexa Fluor 488-conjugated AffiniPure Goat Anti-Rabbit IgG(H+L).