

For Research Use Only

SPOCD1 Polyclonal antibody

Catalog Number: 22243-1-AP **1 Publications**



Basic Information

Catalog Number: 22243-1-AP	GenBank Accession Number: BC114430	Purification Method: Antigen Affinity purified
Size: 150ul, Concentration: 700 µg/ml by Nanodrop;	GeneID (NCBI): 90853	Recommended Dilutions: WB 1:500-1:2000
Source: Rabbit	UNIPROT ID: Q6ZMY3	
Isotype: IgG	Full Name: SPOC domain containing 1	
Immunogen Catalog Number: AG17734	Calculated MW: 1203 aa, 129 kDa	
	Observed MW: 100 kDa	

Applications

Tested Applications: WB, ELISA	Positive Controls: WB : SH-SY5Y cells, HEK-293 cells, human testis tissue
Cited Applications: WB	
Species Specificity: human	
Cited Species: human	

Background Information

The PIWI protein MIWI2 (PIWIL4; 610315) and its associated PIWI-interacting RNAs (piRNAs) direct DNA methylation of transposable elements in the male germline. SPOCD1 is an essential nuclear effector of MIWI2- and piRNA-directed DNA methylation (PubMed: 32674113).

Notable Publications

Author	Pubmed ID	Journal	Application
Takashi Sakaguchi	29796168	Oncotarget	WB

Storage

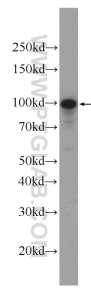
Storage:
Store at -20°C. Stable for one year after shipment.
Storage Buffer:
PBS with 0.02% sodium azide and 50% glycerol pH 7.3.
Aliquoting is unnecessary for -20°C storage

*** 20ul sizes contain 0.1% BSA

For technical support and original validation data for this product please contact:
T: 1 (888) 4PTGLAB (1-888-478-4522) (toll free in USA), or 1(312) 455-8498 (outside USA) E: proteintech@ptglab.com W: ptglab.com

This product is exclusively available under Proteintech Group brand and is not available to purchase from any other manufacturer.

Selected Validation Data



SH-SY5Y cells were subjected to SDS PAGE followed by western blot with 22243-1-AP (SPOCD1 Antibody) at dilution of 1:1000 incubated at room temperature for 1.5 hours.