

For Research Use Only

# THAP10 Polyclonal antibody

Catalog Number: 21897-1-AP



## Basic Information

<b>Catalog Number:</b> 21897-1-AP	<b>GenBank Accession Number:</b> BC027857	<b>Purification Method:</b> Antigen affinity purification
<b>Size:</b> 150ul, Concentration: 700 ug/ml by Nanodrop and 480 ug/ml by Bradford method using BSA as the standard;	<b>GeneID (NCBI):</b> 56906	<b>Recommended Dilutions:</b> WB 1:200-1:1000 IHC 1:50-1:500 IF/ICC 1:20-1:200
<b>Source:</b> Rabbit	<b>UNIPROT ID:</b> Q9P2ZO	
<b>Isotype:</b> IgG	<b>Full Name:</b> THAP domain containing 10	
<b>Immunogen Catalog Number:</b> AG12541	<b>Calculated MW:</b> 257 aa, 28 kDa	
	<b>Observed MW:</b> 33 kDa	

## Applications

**Tested Applications:**  
WB, IHC, IF/ICC, ELISA

**Species Specificity:**  
human, mouse

**Note-IHC: suggested antigen retrieval with TE buffer pH 9.0; (\*) Alternatively, antigen retrieval may be performed with citrate buffer pH 6.0**

**Positive Controls:**

WB : HeLa cells, mouse testis tissue, SMMC-7721 cells

IHC : human stomach tissue,

IF/ICC : HeLa cells,

## Storage

**Storage:**  
Store at -20°C. Stable for one year after shipment.  
**Storage Buffer:**  
PBS with 0.02% sodium azide and 50% glycerol pH 7.3.  
Aliquoting is unnecessary for -20°C storage

\*\*\* 20ul sizes contain 0.1% BSA

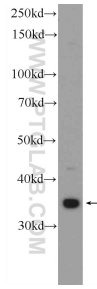
For technical support and original validation data for this product please contact:

T: 1 (888) 4PTGLAB (1-888-478-4522) (toll free in USA), or 1(312) 455-8498 (outside USA)

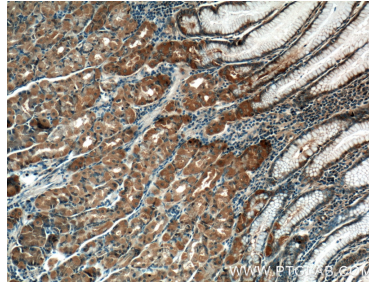
E: [proteintech@ptglab.com](mailto:proteintech@ptglab.com)  
W: [ptglab.com](http://ptglab.com)

This product is exclusively available under Proteintech Group brand and is not available to purchase from any other manufacturer.

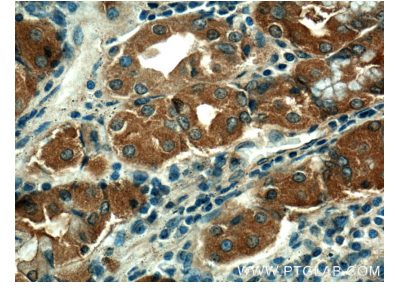
## Selected Validation Data



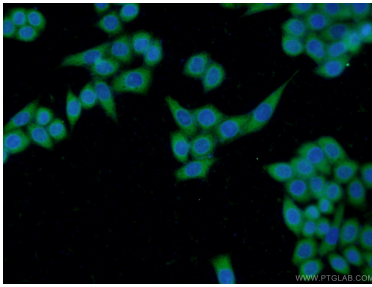
HeLa cells were subjected to SDS PAGE followed by western blot with 21897-1-AP (THAP10 Antibody) at dilution of 1:300 incubated at room temperature for 1.5 hours.



Immunohistochemical analysis of paraffin-embedded human stomach tissue slide using 21897-1-AP (THAP10 Antibody) at dilution of 1:200 (under 10x lens).



Immunohistochemical analysis of paraffin-embedded human stomach tissue slide using 21897-1-AP (THAP10 Antibody) at dilution of 1:200 (under 40x lens).



Immunofluorescent analysis of HeLa cells using 21897-1-AP (THAP10 antibody) at dilution of 1:50 and Alexa Fluor 488-conjugated AffiniPure Goat Anti-Rabbit IgG(H+L).