

For Research Use Only

MAGEC3 Polyclonal antibody

Catalog Number: 21491-1-AP **2 Publications**



Basic Information

Catalog Number: 21491-1-AP	GenBank Accession Number: BC103893	Purification Method: Antigen affinity purification
Size: 150ul, Concentration: 300 µg/ml by Nanodrop and 200 µg/ml by Bradford method using BSA as the standard;	GeneID (NCBI): 139081	Recommended Dilutions: WB 1:500-1:1000 IHC 1:20-1:200 IF/ICC 1:20-1:200
Source: Rabbit	UNIPROT ID: Q8TD91	
Isotype: IgG	Full Name: melanoma antigen family C, 3	
Immunogen Catalog Number: AG15819	Calculated MW: 643 aa, 72 kDa	
	Observed MW: 70-72 kDa	

Applications

Tested Applications: WB, IF, IHC, ELISA	Positive Controls: WB : A375 cells, mouse thymus tissue IHC : human liver cancer tissue, IF/ICC : A375 cells,
Cited Applications: WB, IP	
Species Specificity: human, mouse	
Cited Species: human	
Note-IHC: suggested antigen retrieval with TE buffer pH 9.0; (*) Alternatively, antigen retrieval may be performed with citrate buffer pH 6.0	

Notable Publications

Author	Pubmed ID	Journal	Application
Xiao Song	30309319	BMC Cancer	WB
Qingnan Wu	34347390	Cancer Commun (Lond)	IP

Storage

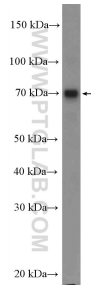
Storage:
Store at -20°C. Stable for one year after shipment.
Storage Buffer:
PBS with 0.02% sodium azide and 50% glycerol pH 7.3.
Aliquoting is unnecessary for -20°C storage

*** 20ul sizes contain 0.1% BSA

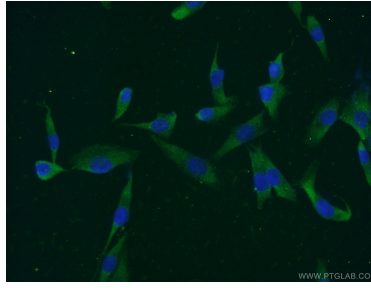
For technical support and original validation data for this product please contact:
T: 1 (888) 4PTGLAB (1-888-478-4522) (toll free in USA), or 1(312) 455-8498 (outside USA)
E: proteintech@ptglab.com
W: ptglab.com

This product is exclusively available under Proteintech Group brand and is not available to purchase from any other manufacturer.

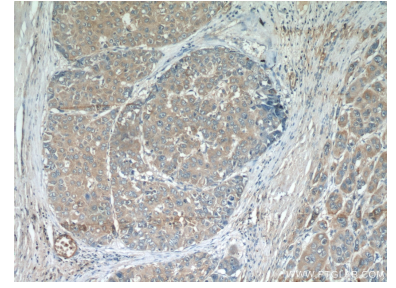
Selected Validation Data



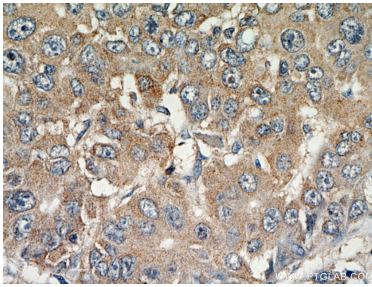
A375 cells were subjected to SDS PAGE followed by western blot with 21491-1-AP (MAGEC3 Antibody) at dilution of 1:600 incubated at room temperature for 1.5 hours.



Immunofluorescent analysis of A375 cells using 21491-1-AP (MAGEC3 antibody) at dilution of 1:50 and Alexa Fluor 488-conjugated AffiniPure Goat Anti-Rabbit IgG(H+L).



Immunohistochemical analysis of paraffin-embedded human liver cancer using 21491-1-AP (MAGEC3 antibody) at dilution of 1:50 (under 10x lens).



Immunohistochemical analysis of paraffin-embedded human liver cancer using 21491-1-AP (MAGEC3 antibody) at dilution of 1:50 (under 40x lens).