

For Research Use Only

MKL1 Polyclonal antibody

Catalog Number: 21166-1-AP

Featured Product

29 Publications



Basic Information

Catalog Number:

21166-1-AP

Size:

150ul, Concentration: 1000 ug/ml by Nanodrop and 560 ug/ml by Bradford method using BSA as the standard;

Source:

Rabbit

Isotype:

IgG

Immunogen Catalog Number:

AG15240

GenBank Accession Number:

BC115039

GeneID (NCBI):

57591

UNIPROT ID:

Q969V6

Full Name:

megakaryoblastic leukemia (translocation) 1

Calculated MW:

931 aa, 99 kDa

Observed MW:

145 kDa

Purification Method:

Antigen affinity purification

Recommended Dilutions:

WB 1:1000-1:6000

IHC 1:50-1:500

IF/ICC 1:20-1:200

Applications

Tested Applications:

WB, IHC, IF/ICC, ELISA

Cited Applications:

WB, IHC, ChIP, IF

Species Specificity:

human, mouse

Cited Species:

human, mouse, rat

Note-IHC: suggested antigen retrieval with TE buffer pH 9.0; (*) Alternatively, antigen retrieval may be performed with citrate buffer pH 6.0

Positive Controls:

WB : HEK-293 cells, HeLa cells, HepG2 cells

IHC : human small intestine tissue, human tonsillitis tissue, human liver cancer tissue

IF/ICC : HeLa cells,

Notable Publications

Author	Pubmed ID	Journal	Application
Fu Du	34548615	Exp Mol Med	WB,IHC,IF,ChIP
Teng Wu	33015041	Front Cell Dev Biol	WB,IF,IHC
Xin Dong	33061800	Int J Biol Sci	WB

Storage

Storage:

Store at -20°C. Stable for one year after shipment.

Storage Buffer:

PBS with 0.02% sodium azide and 50% glycerol pH 7.3.

Aliquoting is unnecessary for -20°C storage

*** 20ul sizes contain 0.1% BSA

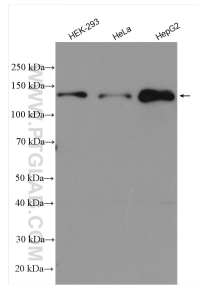
For technical support and original validation data for this product please contact:

T: 1 (888) 4PTGLAB (1-888-478-4522) (toll free in USA), or 1(312) 455-8498 (outside USA)

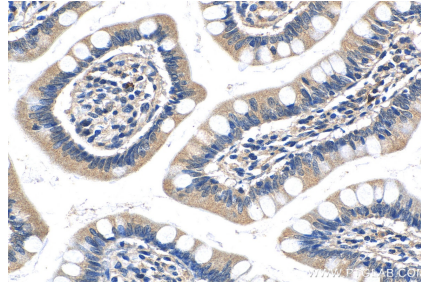
E: proteintech@ptglab.com
W: ptglab.com

This product is exclusively available under Proteintech Group brand and is not available to purchase from any other manufacturer.

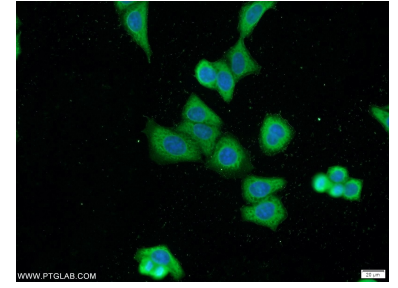
Selected Validation Data



Various lysates were subjected to SDS PAGE followed by western blot with 21166-1-AP (MKL1 antibody) at dilution of 1:3000 incubated at room temperature for 1.5 hours.



Immunohistochemical analysis of paraffin-embedded human small intestine tissue slide using 21166-1-AP (MKL1 antibody) at dilution of 1:200 (under 40x lens).



Immunofluorescent analysis of HeLa cells using 21166-1-AP (MKL1 antibody) at dilution of 1:50 and Alexa Fluor 488-conjugated AffiniPure Goat Anti-Rabbit IgG(H+L).