

For Research Use Only

CSTL1-Specific Polyclonal antibody

Catalog Number: 20086-1-AP



Basic Information

| | | |
|--|---|--|
| Catalog Number: 20086-1-AP | GenBank Accession Number: NM_138283 | Purification Method: Antigen affinity purification |
| Size: 150ul , Concentration: 150 µg/ml by Nanodrop and 133 µg/ml by Bradford method using BSA as the standard; | GeneID (NCBI): 128817 | Recommended Dilutions: IHC 1:20-1:200 |
| Source: Rabbit | UNIPROT ID: Q9H114 | |
| Isotype: IgG | Full Name: cystatin-like 1 | |
| | Calculated MW: 17 kDa | |

Applications

| | |
|--|---|
| Tested Applications: IHC, ELISA | Positive Controls: IHC : human testis tissue, |
| Species Specificity: human, mouse | |
| Note-IHC: suggested antigen retrieval with TE buffer pH 9.0; (*) Alternatively, antigen retrieval may be performed with citrate buffer pH 6.0 | |

Background Information

CSTL1, also named as RCET11, belongs to the cystatin family. The antibody is specific to CSTL1.

Storage

Storage:
Store at -20°C. Stable for one year after shipment.
Storage Buffer:
PBS with 0.02% sodium azide and 50% glycerol pH 7.3.
Aliquoting is unnecessary for -20°C storage

*** 20ul sizes contain 0.1% BSA

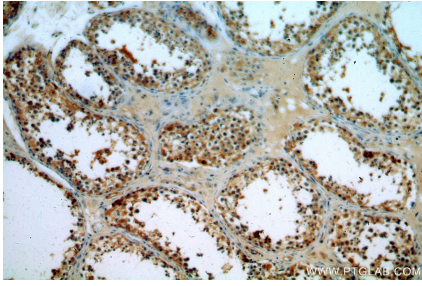
For technical support and original validation data for this product please contact:

T: 1 (888) 4PTGLAB (1-888-478-4522) (toll free in USA), or 1(312) 455-8498 (outside USA)

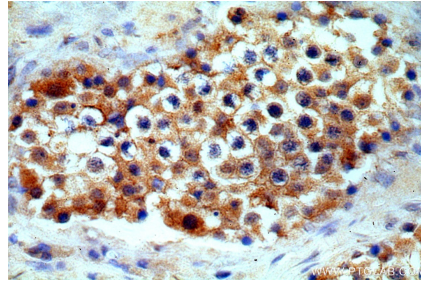
E: proteintech@ptglab.com
W: ptglab.com

This product is exclusively available under Proteintech Group brand and is not available to purchase from any other manufacturer.

Selected Validation Data



Immunohistochemical analysis of paraffin-embedded human testis using 20086-1-AP (CSTL1-Specific antibody) at dilution of 1:50 (under 10x lens).



Immunohistochemical analysis of paraffin-embedded human testis using 20086-1-AP (CSTL1-Specific antibody) at dilution of 1:50 (under 40x lens).