

For Research Use Only

# ZG16 Polyclonal antibody

Catalog Number: 17397-1-AP **1 Publications**



## Basic Information

<b>Catalog Number:</b> 17397-1-AP	<b>GenBank Accession Number:</b> BC029149	<b>Purification Method:</b> Antigen affinity purification
<b>Size:</b> 150ul, Concentration: 400 µg/ml by Nanodrop and 300 µg/ml by Bradford method using BSA as the standard;	<b>GeneID (NCBI):</b> 653808	<b>Recommended Dilutions:</b> WB 1:300-1:600 IHC 1:50-1:500 IF-P 1:50-1:500
<b>Source:</b> Rabbit	<b>UNIPROT ID:</b> O60844	
<b>Isotype:</b> IgG	<b>Full Name:</b> zymogen granule protein 16 homolog (rat)	
<b>Immunogen Catalog Number:</b> AG11332	<b>Calculated MW:</b> 167 aa, 18 kDa	
	<b>Observed MW:</b> 16 kDa	

## Applications

### Tested Applications:

WB, IHC, IF-P, ELISA

### Cited Applications:

WB

### Species Specificity:

human, mouse

### Cited Species:

human

**Note-IHC: suggested antigen retrieval with TE buffer pH 9.0; (\*) Alternatively, antigen retrieval may be performed with citrate buffer pH 6.0**

### Positive Controls:

WB: human colon tissue, mouse colon tissue

IHC: mouse pancreas tissue, human pancreas tissue, mouse colon tissue, mouse small intestine tissue

IF-P: mouse small intestine tissue,

## Background Information

Zymogen granule protein 16 (ZG16) has a Jacalin-like lectin domain, which is mainly expressed by mucus-secreting cells, including goblet cells in the intestine. It's reported that ZG16 expression was significantly decreased in colorectal cancer compared to normal tissue. ZG16 gene expression and copy number variations (CNV) were associated with multiple molecular and clinicopathological features of CRC including MSI, MLH1 silencing and so on. It's found that ZG16 is negatively correlated with lymphatic invasive and distant metastasis. Besides, overexpression of ZG16 blocks PD-L1 expression in colorectal cancer, and promotes NK cells survival and proliferation. Very importantly, ZG16 suppresses colorectal tumor growth via the immune system. (PMID: 33360840, 21893569)

## Notable Publications

Author	Pubmed ID	Journal	Application
Jiaoli Lan	38889269	Adv Sci (Weinh)	WB,IF
Tae-Yoon Park	37438521	Nature	WB

## Storage

### Storage:

Store at -20°C. Stable for one year after shipment.

### Storage Buffer:

PBS with 0.02% sodium azide and 50% glycerol pH 7.3.

Aliquoting is unnecessary for -20°C storage

\*\*\* 20ul sizes contain 0.1% BSA

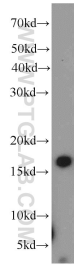
For technical support and original validation data for this product please contact:

T: 1 (888) 4PTGLAB (1-888-478-4522) (toll free in USA), or 1(312) 455-8498 (outside USA)

E: proteintech@ptglab.com  
W: ptglab.com

This product is exclusively available under Proteintech Group brand and is not available to purchase from any other manufacturer.

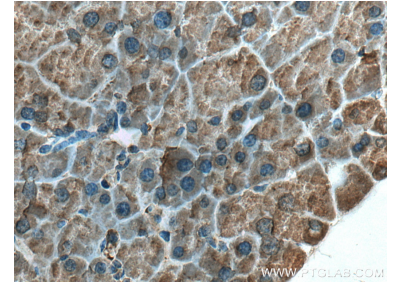
## Selected Validation Data



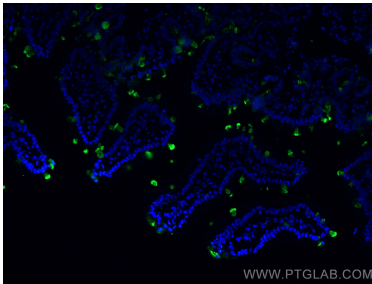
human colon tissue were subjected to SDS PAGE followed by western blot with 17397-1-AP (ZG16 antibody) at dilution of 1:500 incubated at room temperature for 1.5 hours.



Immunohistochemical analysis of paraffin-embedded mouse pancreas tissue slide using 17397-1-AP (ZG16 antibody) at dilution of 1:200 (under 10x lens). Heat mediated antigen retrieval with Tris-EDTA buffer (pH 9.0).



Immunohistochemical analysis of paraffin-embedded mouse pancreas tissue slide using 17397-1-AP (ZG16 antibody) at dilution of 1:200 (under 40x lens). Heat mediated antigen retrieval with Tris-EDTA buffer (pH 9.0).



Immunofluorescent analysis of (4% PFA) fixed mouse small intestine tissue using ZG16 antibody (17397-1-AP) at dilution of 1:200 and CoraLite®488-Conjugated AffiniPure Goat Anti-Rabbit IgG(H+L).