

For Research Use Only

# RPL31 Polyclonal antibody

Catalog Number: 16497-1-AP **2 Publications**



## Basic Information

<b>Catalog Number:</b> 16497-1-AP	<b>GenBank Accession Number:</b> BC017343	<b>Purification Method:</b> Antigen affinity purification
<b>Size:</b> 150ul , Concentration: 240 µg/ml by Nanodrop and 133 µg/ml by Bradford method using BSA as the standard;	<b>GeneID (NCBI):</b> 6160	<b>Recommended Dilutions:</b> WB 1:500-1:1000 IF 1:50-1:500
<b>Source:</b> Rabbit	<b>Full Name:</b> ribosomal protein L31	
<b>Isotype:</b> IgG	<b>Calculated MW:</b> 125 aa, 14 kDa	
<b>Immunogen Catalog Number:</b> AG9648	<b>Observed MW:</b> 14 kDa	

## Applications

<b>Tested Applications:</b> IF, WB, ELISA	<b>Positive Controls:</b> WB : HepG2 cells, mouse liver tissue, NIH/3T3 cells
<b>Cited Applications:</b> WB	<b>IF :</b> HepG2 cells,
<b>Species Specificity:</b> human, mouse, rat	
<b>Cited Species:</b> human	

## Background Information

The mammalian ribosome comprises 79 ribosomal proteins and four rRNAs, which combine in equimolar ratios to form the small (40S) and large (60S) subunits. Ribosome proteins are a direct and critical target of the PI3K pathway in promoting growth.[PMID:15289434]. Ribosomal protein L31 gene is a component of the 60S large ribosomal subunit encoded by RPL31 gene, while ribosomal protein L31 (RPL31) is an important constituent of peptidyltransferase center [PMID:22714919].

## Notable Publications

Author	Pubmed ID	Journal	Application
Long Jiang	28502657	Curr Biol	WB
Magdalena Wolczyk	37123244	iScience	WB

## Storage

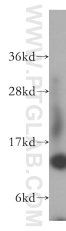
**Storage:**  
Store at -20°C. Stable for one year after shipment.  
**Storage Buffer:**  
PBS with 0.02% sodium azide and 50% glycerol pH 7.3.  
Aliquoting is unnecessary for -20°C storage

\*\*\* 20ul sizes contain 0.1% BSA

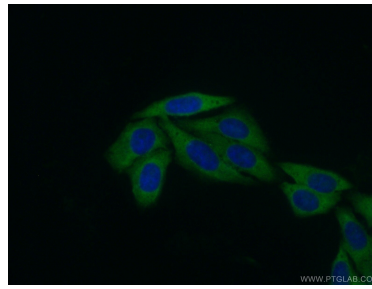
For technical support and original validation data for this product please contact:  
T: 1 (888) 4PTGLAB (1-888-478-4522) (toll free in USA), or 1(312) 455-8498 (outside USA)  
E: proteintech@ptglab.com  
W: ptglab.com

This product is exclusively available under Proteintech Group brand and is not available to purchase from any other manufacturer.

## Selected Validation Data



HepG2 cells were subjected to SDS PAGE followed by western blot with 16497-1-AP (RPL31 antibody) at dilution of 1:300 incubated at room temperature for 1.5 hours.



Immunofluorescent analysis of (10% Formaldehyde) fixed HepG2 cells using 16497-1-AP (RPL31 antibody) at dilution of 1:50 and Alexa Fluor 488-conjugated AffiniPure Goat Anti-Rabbit IgG(H+L).