

For Research Use Only

# MCM8 Polyclonal antibody

Catalog Number: 16451-1-AP **8 Publications**



## Basic Information

**Catalog Number:**

16451-1-AP

**Size:**

150ul, Concentration: 550 µg/ml by Nanodrop and 220 µg/ml by Bradford method using BSA as the standard;

**Source:**

Rabbit

**Isotype:**

IgG

**Immunogen Catalog Number:**

AG8696

**GenBank Accession Number:**

BC008830

**GeneID (NCBI):**

84515

**UNIPROT ID:**

Q9UJA3

**Full Name:**

minichromosome maintenance complex component 8

**Calculated MW:**

880 aa, 98 kDa

**Observed MW:**

90-95 kDa

**Purification Method:**

Antigen affinity purification

**Recommended Dilutions:**

WB 1:1000-1:5000

IP 0.5-4.0 ug for 1.0-3.0 mg of total protein lysate

## Applications

**Tested Applications:**

WB, IP, ELISA

**Cited Applications:**

WB, IF, CoIP

**Species Specificity:**

human, mouse, rat

**Cited Species:**

human

**Positive Controls:**

WB : HEK-293T cells, NIH/3T3 cells

IP : NIH/3T3 cells,

## Background Information

MCM8, also named as Minichromosome maintenance 8, is a 840 amino acid protein, which belongs to the MCM family. MCM8 is expressed highly in placenta, lung and pancreas and various tumors with highest levels in colon and lung cancers. MCM8 is a component of the MCM8-MCM9 complex, which involved in homologous recombination repair following DNA interstrand cross-links and plays a key role during gametogenesis. MCM8 exists some isoforms with MV 94 kDa and 70 kDa.

## Notable Publications

Author	Pubmed ID	Journal	Application
Anna Klucnika	36355348	J Cell Biol	WB,IF,CoIP
Jen-Wei Huang	32528060	Nat Commun	WB
Kang Liu	32647118	Cell Death Dis	WB

## Storage

**Storage:**

Store at -20°C. Stable for one year after shipment.

**Storage Buffer:**

PBS with 0.02% sodium azide and 50% glycerol pH 7.3.

Aliquoting is unnecessary for -20°C storage

**\*\*\* 20ul sizes contain 0.1% BSA**

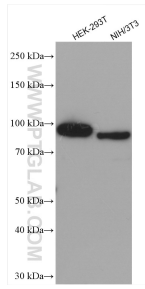
For technical support and original validation data for this product please contact:

T: 1 (888) 4PTGLAB (1-888-478-4522) (toll free in USA), or 1(312) 455-8498 (outside USA)

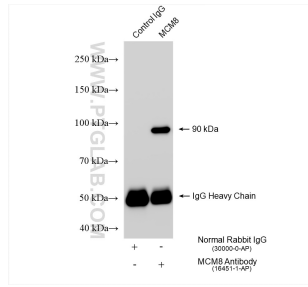
E: proteintech@ptglab.com  
W: ptglab.com

**This product is exclusively available under Proteintech Group brand and is not available to purchase from any other manufacturer.**

## Selected Validation Data



Various lysates were subjected to SDS PAGE followed by western blot with 16451-1-AP (MCM8 antibody) at dilution of 1:2500 incubated at room temperature for 1.5 hours.



IP result of anti-MCM8 (IP:16451-1-AP, 4ug; Detection:16451-1-AP 1:3000) with NIH/3T3 cells lysate 1505 ug.