

For Research Use Only

# ATP5L Polyclonal antibody

Catalog Number: 16307-1-AP **3 Publications**



## Basic Information

<b>Catalog Number:</b> 16307-1-AP	<b>GenBank Accession Number:</b> BC015128	<b>Purification Method:</b> Antigen affinity purification
<b>Size:</b> 150ul , Concentration: 450 µg/ml by Nanodrop;	<b>GeneID (NCBI):</b> 10632	<b>Recommended Dilutions:</b> WB 1:1000-1:4000
<b>Source:</b> Rabbit	<b>Full Name:</b> ATP synthase, H <sup>+</sup> transporting, mitochondrial F <sub>0</sub> complex, subunit G	
<b>Isotype:</b> IgG	<b>Calculated MW:</b> 11 kDa	
<b>Immunogen Catalog Number:</b> AG9287	<b>Observed MW:</b> 11 kDa	

## Applications

<b>Tested Applications:</b> WB, ELISA	<b>Positive Controls:</b> WB : mouse liver tissue, rat liver tissue
<b>Cited Applications:</b> WB	
<b>Species Specificity:</b> human, mouse, rat	
<b>Cited Species:</b> human, rat	

## Background Information

Mitochondrial membrane ATP synthase (F<sub>1</sub>-F<sub>0</sub> ATP synthase or Complex V) produces ATP from ADP in the presence of a proton gradient across the membrane which is generated by electron transport complexes of the respiratory chain. It is composed of the soluble catalytic core, F<sub>1</sub>, and the membrane-spanning component and F<sub>0</sub>, which comprises the proton channel. The F<sub>0</sub> seems to have nine subunits (a, b, c, d, e, f, g, F<sub>6</sub> and 8). ATP5L gene encodes ATP synthase subunit g of the F<sub>0</sub> complex.

## Notable Publications

Author	Pubmed ID	Journal	Application
Tetsuro Matsushashi	28579242	EBioMedicine	
Ruchika Anand	27479602	PLoS One	WB
Sun Dongmei D	23170809	J Proteome Res	WB

## Storage

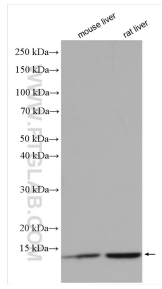
**Storage:**  
Store at -20°C. Stable for one year after shipment.  
**Storage Buffer:**  
PBS with 0.02% sodium azide and 50% glycerol pH 7.3.  
Aliquoting is unnecessary for -20°C storage

\*\*\* 20ul sizes contain 0.1% BSA

For technical support and original validation data for this product please contact:  
T: 1 (888) 4PTGLAB (1-888-478-4522) (toll free in USA), or 1(312) 455-8498 (outside USA)  
E: proteintech@ptglab.com  
W: ptglab.com

This product is exclusively available under Proteintech Group brand and is not available to purchase from any other manufacturer.

## Selected Validation Data



Various lysates were subjected to SDS PAGE followed by western blot with 16307-1-AP (ATP5L antibody) at dilution of 1:2000 incubated at room temperature for 1.5 hours.