

For Research Use Only

# PQBP1 Polyclonal antibody

Catalog Number: 16264-1-AP **4 Publications**



## Basic Information

<b>Catalog Number:</b> 16264-1-AP	<b>GenBank Accession Number:</b> BC012358	<b>Purification Method:</b> Antigen affinity purification
<b>Size:</b> 150ul, Concentration: 700 ug/ml by Nanodrop;	<b>GeneID (NCBI):</b> 10084	<b>Recommended Dilutions:</b> WB 1:1000-1:4000 IP 0.5-4.0 ug for 1.0-3.0 mg of total protein lysate IHC 1:500-1:2000 IF/ICC 1:50-1:500
<b>Source:</b> Rabbit	<b>UNIPROT ID:</b> O60828	
<b>Isotype:</b> IgG	<b>Full Name:</b> polyglutamine binding protein 1	
<b>Immunogen Catalog Number:</b> AG9329	<b>Calculated MW:</b> 265 aa, 30 kDa	
	<b>Observed MW:</b> 30-32 kDa	

## Applications

<b>Tested Applications:</b> WB, IHC, IF/ICC, IP, ELISA	<b>Positive Controls:</b> <b>WB:</b> HeLa cells, mouse brain tissue, mouse skeletal muscle tissue, rat brain tissue <b>IP:</b> mouse brain tissue, <b>IHC:</b> human breast cancer tissue, human colon tissue, rat colon tissue <b>IF/ICC:</b> HeLa cells,
<b>Cited Applications:</b> WB, IHC, IP, IF	
<b>Species Specificity:</b> human, mouse, rat	
<b>Cited Species:</b> human, mouse	

**Note-IHC: suggested antigen retrieval with TE buffer pH 9.0; (\*) Alternatively, antigen retrieval may be performed with citrate buffer pH 6.0**

## Background Information

PQBP1 (Polyglutamine-binding protein 1) is also named as NPW38 and JM26. PQBP1 senses extrinsic tau 3R/4R proteins by direct interaction and triggers an innate immune response by activating a cyclic GMP-AMP synthase (cGAS)-Stimulator of interferon genes (STING) pathway (PMID: 34782623). PQBP1 is abundantly expressed in the central nervous system during development. PQBP1 is a component of the precatalytic spliceosome (B complex) that is involved in splicing. PQBP1 was predominantly localized in the cell nucleus. PQBP1 is overexpressed in various cancer types including breast cancer, colon cancer, and glioblastoma (PMID: 38342602).

## Notable Publications

Author	Pubmed ID	Journal	Application
Hongming Ma	32156810	mBio	WB
Yuqian Shen	33662272	Mol Cell	WB, IP, IF
Xian Liu	39037895	Cell Rep	WB,IP,IF

## Storage

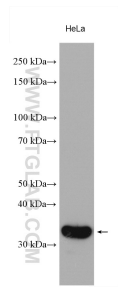
**Storage:**  
Store at -20°C. Stable for one year after shipment.  
**Storage Buffer:**  
PBS with 0.02% sodium azide and 50% glycerol pH 7.3.  
Aliquoting is unnecessary for -20°C storage

\*\*\* 20ul sizes contain 0.1% BSA

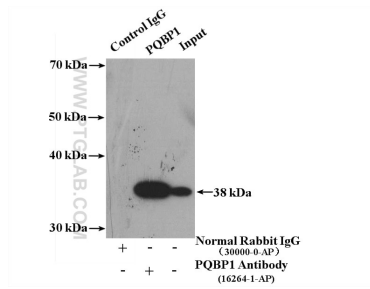
For technical support and original validation data for this product please contact:  
T: 1 (888) 4PTGLAB (1-888-478-4522) (toll free in USA), or 1(312) 455-8498 (outside USA)  
E: proteintech@ptglab.com  
W: ptglab.com

This product is exclusively available under Proteintech Group brand and is not available to purchase from any other manufacturer.

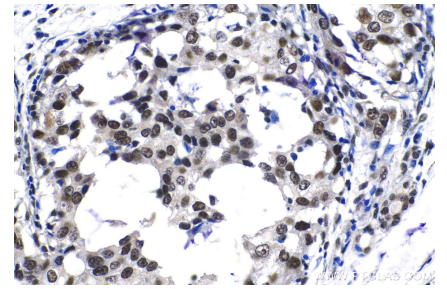
## Selected Validation Data



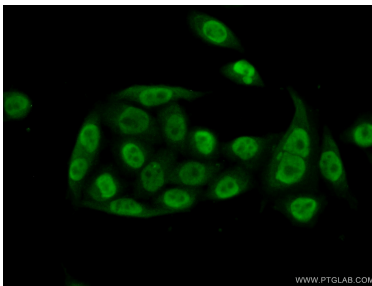
HeLa cells were subjected to SDS PAGE followed by western blot with 16264-1-AP (PQBP1 antibody) at dilution of 1:2000 incubated at room temperature for 1.5 hours.



IP result of anti-PQBP1 (IP:16264-1-AP, 4ug; Detection:16264-1-AP 1:500) with mouse brain tissue lysate 3200 ug.



Immunohistochemical analysis of paraffin-embedded human breast cancer tissue slide using 16264-1-AP (PQBP1 antibody) at dilution of 1:1000 (under 40x lens).



Immunofluorescent analysis of (10% Formaldehyde) fixed HeLa cells using 16264-1-AP (PQBP1 antibody) at dilution of 1:50 and Alexa Fluor 488-conjugated Goat Anti-Rabbit IgG(H+L).