

For Research Use Only

# MDM1-Specific Polyclonal antibody

Catalog Number:16171-1-AP



## Basic Information

**Catalog Number:**

16171-1-AP

**Size:**

150ul , Concentration: 700 ug/ml by Nanodrop and 360 ug/ml by Bradford method using BSA as the standard;

**Source:**

Rabbit

**Isotype:**

IgG

**GenBank Accession Number:**

NM\_020128

**GeneID (NCBI):**

56890

**UNIPROT ID:**

Q8TC05

**Full Name:**

Mdm1 nuclear protein homolog (mouse)

**Calculated MW:**

81 kDa

**Observed MW:**

81 kDa

**Purification Method:**

Antigen affinity purification

**Recommended Dilutions:**

WB 1:500-1:2000

## Applications

**Tested Applications:**

WB, ELISA

**Species Specificity:**

human, mouse, rat

**Positive Controls:**

WB : human brain tissue,

## Storage

**Storage:**

Store at -20°C. Stable for one year after shipment.

**Storage Buffer:**

PBS with 0.02% sodium azide and 50% glycerol pH 7.3.

Aliquoting is unnecessary for -20°C storage

**\*\*\* 20ul sizes contain 0.1% BSA**

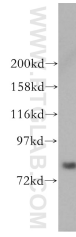
For technical support and original validation data for this product please contact:

T: 1 (888) 4PTGLAB (1-888-478-4522) (toll free in USA), or 1(312) 455-8498 (outside USA)

E: [proteintech@ptglab.com](mailto:proteintech@ptglab.com)  
W: [ptglab.com](http://ptglab.com)

**This product is exclusively available under Proteintech Group brand and is not available to purchase from any other manufacturer.**

## Selected Validation Data



human brain tissue were subjected to SDS PAGE followed by western blot with 16171-1-AP (MDM1-Specific antibody) at dilution of 1:300 incubated at room temperature for 1.5 hours.